



i-Tree

---

Eco

User's Manual

4.19.2021

v6.0

i-Tree is a cooperative initiative



**Arbor Day Foundation**



# About i-Tree

i-Tree is a state-of-the-art, peer-reviewed software suite from the USDA Forest Service that provides urban and community forestry analysis and benefit assessment tools. The i-Tree tools help communities of all sizes to strengthen their urban forest management and advocacy efforts by quantifying the environmental services that trees provide and assessing the structure of the urban forest.

i-Tree has been used by communities, non-profit organizations, consultants, volunteers, and students to report on the urban forest at all scales from individual trees to parcels, neighborhoods, cities, and entire states. By understanding the local, tangible ecosystem services that trees provide, i-Tree users can link urban forest management activities with environmental quality and community livability. Whether your interest is a single tree or an entire forest, i-Tree provides baseline data that you can use to demonstrate value and set priorities for more effective decision-making.

Developed by the USDA Forest Service and numerous cooperators, i-Tree is in the public domain and available by request through the i-Tree website ([www.itreetools.org](http://www.itreetools.org)). The Forest Service, Davey Tree Expert Company, Arbor Day Foundation, Society of Municipal Arborists, International Society of Arboriculture, Casey Trees, and State University of New York College of Environmental Science and Forestry have entered into a cooperative partnership to further develop, disseminate, and provide technical support for the suite.

## Disclaimer

The use of trade, firm, or corporation names in this publication is solely for the information and convenience of the reader. Such use does not constitute an official endorsement or approval by the U.S. Department of Agriculture or the Forest Service of any product or service to the exclusion of others that may be suitable. The software distributed under the label “i-Tree 2019 Suite” is provided without warranty of any kind. Its use is governed by the End User License Agreement (EULA) to which the user agrees before installation.

## Feedback

The i-Tree Development Team actively seeks feedback on any component of the project: the software suite itself, the manuals, or the process of development, dissemination, support, and refinement. Please send comments through any of the means listed on the i-Tree support page: [www.itreetools.org/support/](http://www.itreetools.org/support/).

# i-Tree Products

The 2019 i-Tree software suite includes the following urban forest analysis tools and utility programs:

## Desktop Applications

**i-Tree Eco** provides a broad picture of the urban forest or trees in your study area. It is designed to use field data from complete inventories of trees or randomly located plots throughout a community along with local hourly air pollution and meteorological data to quantify urban forest structure, environmental effects, and value to communities.

**i-Tree Hydro** is the first vegetation-specific urban hydrology model. It is designed to model the effects of changes in urban tree cover and impervious surfaces on hourly stream flows and water quality at the watershed level.

**i-Tree Vue** (legacy) allows you to make use of the freely available National Land Cover Database (NLCD) satellite-based imagery to assess your community's land cover, including tree canopy, and some of the ecosystem services provided by your current urban forest. The effects of planting scenarios on future benefits can also be modeled.

## Web Applications

**i-Tree Landscape** is an online tool that allows you to explore geospatial data for an area of interest. It makes use of datasets, such as land cover and U.S. Census data, to provide local information, tree benefits, and planting prioritization by designated management boundaries.

**i-Tree Design** is a simple online tool that provides a platform for assessments of individual trees at the parcel level. This tool links to Google Maps and allows you to see how tree selection, tree size, and placement around a building affects energy use and other benefits. This tool not only estimates tree benefits for the current year, but also projects benefits over time to a user-specified year in the future.

**i-Tree Canopy** offers a quick and easy way to produce a statistically valid estimate of land cover types (e.g., tree cover) using aerial images available in Google Maps. The data can be used by urban forest managers to estimate tree canopy cover, set canopy goals, and track success; and to estimate inputs for use in i-Tree Hydro and elsewhere where land cover data are needed. Canopy also estimates tree benefits based on the amount of tree cover in your study area.

**i-Tree Species** is designed to help users select the most appropriate tree species based on the species potential environmental services and geographic area. Users select and rank the importance (0-10) of each environmental service desired from trees. The program then calculates the best tree species based on the user-provided weighting of environmental benefits of tree species at maturity.

**i-Tree MyTree** is a quick and easy mobile tool allowing you to explore the benefits provided by the trees near you.

**i-Tree Database** is an online system designed for international users outside of the United States, Canada, Mexico, Australia, South Korea, Colombia and most countries in Europe to submit properly formatted international pollution and weather data, location information, new species information, and other requirements needed for the i-Tree Eco model to process in a new, previously unsupported study area. The submitted information will be vetted by the U.S. Forest Service and integrated into the Eco model as a new international location that would be available for automated processing in future updates of Eco.

**i-Tree Storm (legacy)** helps you to assess widespread community damage in a simple, credible, and efficient manner immediately after a severe storm. It is adaptable to various community types and sizes and provides information on the time and funds needed to mitigate storm damage.

**i-Tree Planting Calculator** is designed to help estimate long-term environmental benefits from a tree planting project. The focus is greenhouse gases, but many co-benefits are included.

**i-Tree County** allows users to assess benefits of trees within a county.

# Acknowledgements

Components of the i-Tree software suite have been developed over the last few decades by the U.S. Forest Service and numerous cooperators. Support for the development and release of the 2019 i-Tree software suite has come from USDA Forest Service Research, State and Private Forestry, and their cooperators through the i-Tree Cooperative Partnership of the Davey Tree Expert Company, Arbor Day Foundation, Society of Municipal Arborists, International Society of Arboriculture, Casey Trees, and State University of New York College of Environmental Science and Forestry.

## **i-Tree Eco**

i-Tree Eco is an adaptation of the Urban Forest Effects (UFORE) model, which was cooperatively developed by the U.S. Forest Service Northern Research Station (NRS), USDA State and Private Forestry's Urban and Community Forestry Program and Northeastern Area, Davey Tree Expert Company, and SUNY College of Environmental Science and Forestry.

The UFORE model was conceived and developed by David J. Nowak and Daniel E. Crane (USFS, NRS), and Patrick McHale (SUNY-ESF). The UFORE software was designed and developed by Daniel E. Crane and its graphical user interface (GUI) by Lianghu Tian and Mike Binkley (The Davey Institute). Many individuals contributed to the design and development process of the UFORE application including Mike Binkley (The Davey Institute), Jaewon Choi (SUNY-ESF), Daniel E. Crane (NRS), Greg Ina (The Davey Institute), Robert E. Hoehn (NRS), Jerry Bond and Christopher J. Luley (Urban Forestry LLC), Patrick McHale (SUNY-ESF), David J. Nowak (NRS), Jack C. Stevens (NRS), Lianghu Tian (The Davey Institute), Jeffrey T. Walton (Paul Smiths College), and Robert Sacks (Bluejay Software).

New modeling functions, desktop processing capabilities, and updates for i-Tree Eco versions were developed and integrated by members of the USFS-NRS and The Davey Institute based on newly available research from NRS and feedback from i-Tree users. i-Tree Eco Development Team members and contributors include Satoshi Hirabayashi, Alexis Ellis, Daniel Crane, Lianghu Tian, Megan Kerr, David Ellingsworth, Allison Bodine, Daniel Vicarel, Mike Binkley, Al Zelaya, Jason Henning, Scott Maco, Heidi Siciliano, Michael Leff, Emmanuel Ong, and Vidmantas Steponavicius.

## **International Support**

Many people have contributed to the development of i-Tree Eco to make the application functional for users in Australia, Canada, Mexico, Colombia, South Korea and most countries in Europe. Data for the Australian enhancements were provided, in part, by Craig Hallam and

Chris Spencer (ENSPEC Environment and Risk) and with funding from Arboriculture Australia. Andy Kenney (University of Toronto) helped facilitate data acquisition for Canada. Kenton Rogers, Keith Sacre (Treeconomics), Kieron Doick (Forest Research) assisted with project coordination, data acquisition, funding, and development of the United Kingdom Eco model adaptation. Naomi Zurcher, Johan Ostberg and Tim Aevermann assisted with project coordination, data acquisition, funding, and development of Eco model adaptation for most countries in Europe. María del Pilar Arroyave Maya and Camille McCarthy assisted with project coordination, data acquisition, funding, and development of Eco model adaptation for Colombia.

# Table of Contents

<b>About i-Tree</b> .....	<b>i</b>
Disclaimer.....	i
Feedback.....	i
<b>i-Tree Products</b> .....	<b>ii</b>
Desktop Applications.....	ii
Web Applications.....	ii
<b>Acknowledgements</b> .....	<b>iv</b>
i-Tree Eco .....	iv
International Support .....	iv
<b>Table of Contents</b> .....	<b>vi</b>
<b>About i-Tree Eco</b> .....	<b>1</b>
International Projects.....	1
Supported Countries.....	1
Other International Eco Users .....	2
<b>What's New in v6.0</b> .....	<b>3</b>
Important Differences .....	3
Legacy Version.....	4
<b>The Eco Rundown</b> .....	<b>5</b>
<b>Phase I: Planning For Your Project</b> .....	<b>6</b>
Decision Tree .....	6
Project Basics.....	7
What are the boundaries of your study area?.....	7
What type of inventory will you do? .....	7
Complete Inventory .....	7
Do you have an existing inventory?.....	7
Plot-Based Sample Inventory.....	8
Will you stratify your sample? .....	8
How big will your plots be? .....	10
How many plots will you inventory?.....	10
<b>Phase II: Setting Up Your Project</b> .....	<b>12</b>



Guide to Next Steps .....	12
The Data Gathering Step .....	13
Species Information .....	15
Location Information .....	15
Precipitation Data .....	16
Pollution Data .....	16
Valuation Data .....	17
The Sample Creation Step .....	17
Randomization .....	18
Sample Creation Methods .....	19
<b>Phase III: Collecting Your Field Data .....</b>	<b>21</b>
Choosing Your Data .....	21
Required Variables .....	21
Supplemental Analyses .....	22
Data Collection Options .....	23
Collecting Strata for Complete Inventories .....	28
Deciding How to Record Your Data .....	29
Using the Mobile Data Collector .....	29
Using Paper Forms .....	30
Additional Options .....	30
Preparing for the Field .....	31
Mapping Field Plots .....	31
Getting Started in Eco .....	31
Preparing Paper Forms .....	32
Preparing the Mobile Data Collector .....	33
Going Out in the Field .....	33
<b>Phase IV: Working with Eco .....</b>	<b>34</b>
Getting to Know Eco .....	34
Navigating the User Interface .....	35
File Menu .....	36
Project Configuration .....	37
Data .....	42
View .....	47

Reports .....	48
Forecast.....	53
Support .....	57
Adding Data.....	58
From Paper Forms.....	59
From the Mobile Data Collector .....	59
From the Complete Inventory Importer .....	59
<b>Phase V: Viewing Your Reports .....</b>	<b>62</b>
Running the Eco Model .....	62
Overview of Reports .....	63
Reports .....	65
Project Metadata.....	65
Written Report.....	65
Composition and Structure Reports.....	65
Benefits and Costs Reports .....	72
Individual Level Results .....	79
Air Quality and Public Health Reports .....	82
Pest Analysis Reports.....	82
Pollution and Weather Reports.....	84
Model Notes.....	88
Sharing Your Project .....	88
Pack Project.....	88
<b>Glossary.....</b>	<b>90</b>
i-Tree Eco .....	90
Resource Structure .....	91
Ecosystem Services .....	92
Values.....	93

# About i-Tree Eco

i-Tree Eco is a software application designed to use field data from complete inventories of trees or randomly located plots throughout a community along with local hourly air pollution and meteorological data to quantify urban forest structure, environmental effects, and value to communities. Baseline data can be used by managers and researchers for making effective resource management decisions, developing policy, and setting priorities.

From project start to finish, Eco is a complete package that provides users with the following components:

- Detailed, statistically based sampling and data collection protocols. These protocols allow for estimation of totals and variation related to urban forest structure and population effects.
- A mobile data collector for web-enabled smartphones, tablets, or similar devices that can be used for field data collection.
- A central computing engine that makes scientifically sound estimates of the effects of urban forests based on peer-reviewed scientific equations to predict environmental and economic benefits.
- Summary reports that include charts, tables, and a written report.



## Eco Guide

To install the i-Tree Eco software, please see the **Eco Guide to Installing Software** for system requirements and installation instructions.

## International Projects

Though i-Tree Eco was originally developed for the United States, growing interest among international urban foresters has spurred improved model functionality in other countries as time and limited resources have permitted.

## Supported Countries

Eco v6.0 has been adapted for use throughout Canada, Australia, Mexico, South Korea, Colombia and most countries in Europe with the necessary species information, location information, and pollution and weather data preprocessed and available in the application.

## Other International Eco Users

International users completing projects in countries other than Canada, Australia, Mexico, South Korea, Colombia and most countries in Europe. will be required to submit additional data using the i-Tree Database web application. The new **i-Tree Database** system has been developed to support the increasing number of international projects. Users in unsupported countries will work with i-Tree Database to add the necessary tree species information, location information, and properly formatted pollution and precipitation data for their project study area. Once data has been submitted, it can be incorporated into a future version of Eco allowing for automated processing in these newly added locations.



### Eco Guide

International users are encouraged to read more about the requirements and process of completing an Eco project in an unsupported location. Additionally, certain limitations apply to international projects outside of the United States both in terms of functionality and required inputs. This information is outlined in the **Eco Guide to International Projects**.

# What's New in v6.0

The most recent version of i-Tree Eco offers several upgrades over previous version, including the following:

- **Mexico and Europe Integration** - Eco now works seamlessly in many cities in Mexico and Europe. Users can select numerous locations throughout Mexico and Europe for the same automated processing available in the US, Canada, and Australia. Not all cities may be available due to limitations on data availability. Users can typically select the closest, representative location, or submit new cities for future i-Tree integration by providing local data and information needed through [i-Tree Database](#).
- **New Global Cities** - The i-Tree User community has provided data through i-Tree Database to facilitate integration of numerous international cities for automated processing in Eco. [See what locations are currently available in Eco](#).
- **Map coordinate data while using the Mobile Data Collector web app:** manually type in coordinates, use the device GPS, or tap a location on the map that is displayed through a data connection. To read more about this, please see the [Capturing Coordinate Data](#) guide.
- **New Reports** - Newer reports include Plot, Tree and Shrub Comments, and the Air Quality Health impacts and Values report is split into four reports (By Tree, By Shrub, By Grass, Summary). Some reports are limited to US locations and plot-based projects.
- **Weather and Pollution Data Availability** – 2016 is now included.
- **U.S. Carbon and CO<sub>2</sub> dollar valuations** have been updated to:
  - [Carbon](#) price per 1 metric ton is \$188.
  - [CO<sub>2</sub>](#) equivalent price per 1 metric ton is \$188/3.67 or approximately \$51.22.
    - These values are taken from the Social Cost of Carbon and are adjusted to 2018 dollars.
    - Eco previously used \$145.95 per metric ton of carbon.

To read all recent changes made to i-Tree Eco, please see the [change log](#).

For more information on the methodology that underlies Eco, visit [i-Tree Eco V6 Resources](#).

## Important Differences

Changes in technology and science over time influence the development of software applications. While Eco v6.0 offers many new features, several important differences should be noted. The following features are not available in Eco v6.0:

- **Custom processing for international projects** – In an effort to accommodate growing international interest, a new system for handling projects in unsupported countries has

been developed for Eco v6.0. Previously, international users submitted their project to the U.S. Forest Service for manual processing which could take up to 6 months to complete. Now, international users can work with the i-Tree Database application to have their new international locations incorporated into a future version of Eco. Once new locations are available in Eco, all users will be able to automatically process projects for that study area.

- **Particulate matter less than 10 microns (PM<sub>10</sub>)** – The pollutant PM<sub>10</sub> is no longer included because i-Tree Eco v6.0 analyzes particulate matter less than 2.5 microns (PM<sub>2.5</sub>) which is a subset of PM<sub>10</sub>. PM<sub>2.5</sub> is generally more relevant in discussions concerning air pollution effects on human health.
- **PDA**s – Handheld devices, such as PDAs, are no longer supported for data collection in Eco v6.0. Users collecting data with a PDA may use the legacy Eco v5.0 application, and then import the data into Eco v6.0.



#### Tip

Try using the mobile data collector when you collect your field data. This option is compatible with Eco v6.0 and can be used with any web-enabled device, such as a smartphone or tablet.



#### Eco Guide

For more information on model differences from v5.0 to v6.0, please see the [Eco Guide to Model Differences](#).

## Legacy Version

Users with existing Eco projects will be able to make use of i-Tree Eco v6.0. However, i-Tree Eco v5.0 will still be available as a legacy Eco application, particularly to accommodate users interested in some features, such as data collection using a PDA, that are no longer supported in Eco v6.0. The legacy version of the software is included in the i-Tree 2019 software installation.

# The Eco Rundown

Completing an i-Tree Eco analysis can seem like a daunting task, so here are the most important things you need to know about using this software:

- Eco projects are highly customizable and thus require a significant amount of planning.
- The Eco model uses field data to estimate forest structure, function, and benefits so you will be required to collect data for the individual trees in your study area.

This manual will walk you through the stepwise process of completing an i-Tree Eco project by describing the following project phases in more detail:

## Phase I: Planning For Your Project

There are many decisions to be made in order to customize your Eco project. To help you work through this planning phase, we have provided a simple decision tree that will guide you through the questions that must be answered.

## Phase II: Setting Up Your Project

Once you have planned what type of project you will be doing, you can begin setting up your project. Depending on your answers in Phase I, you may need to gather additional data or create your sample. Here we will guide you through those next steps.

## Phase III: Collecting Your Field Data

After Phase II is complete, you are ready to move to the data collection phase! In this section of the manual, we will help you decide what data you will collect in the field and how you would like to collect that data.

## Phase IV: Working with Eco

After you have collected your field data, you will be ready to work directly with the i-Tree Eco software. In this section, we will describe each of the components of the user interface in detail and walk you through the process of entering or editing your field data.

## Phase V: Viewing Your Reports

Eco provides a large variety of output data in the form of charts, tables, and reports. This section of the manual describes what results are available and how to view them.



### Tip

Supplement the basic knowledge that can be gained from this manual with the topic-specific information in the **Eco Guides**. That way, you can choose to read about the topics that are relevant to your custom project.

# Phase I: Planning For Your Project

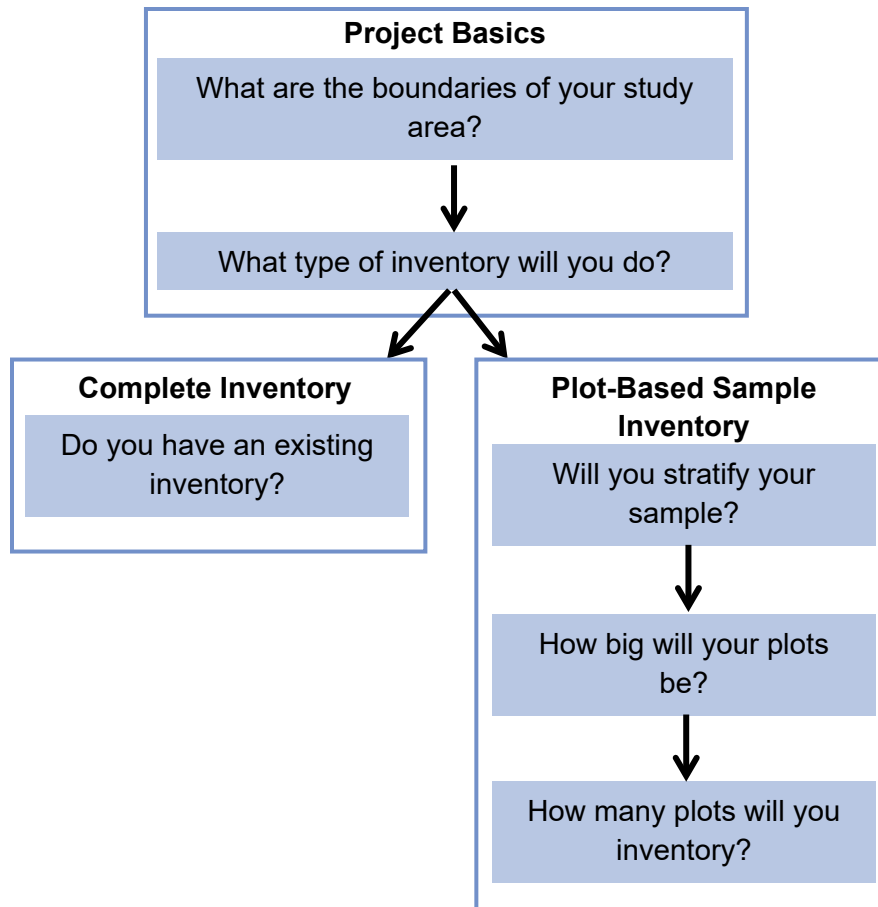


## Tip

i-Tree Eco users have developed a number of documents to help others with many aspects of project planning and management. These are an excellent resource and can be found at [i-Tree Eco Project Planning and Management Resources](#).

## Decision Tree

Before you get started with Eco there are several decisions that must be made. Use this simple decision tree as a guide for Phase I. As you can see, not every question will be relevant to your Eco project. In the remainder of this section of the manual, we'll provide you with more information to help answer these questions.





## Project Basics

### What are the boundaries of your study area?

An Eco analysis can be done for an entire city, a neighborhood, a park, or even a backyard.

### What type of inventory will you do?

A typical Eco project involves inventorying a series of sample plots distributed across a city, a large university campus, or some other broad, diverse landscape. This inventory type is referred to in Eco as a plot-based sample inventory. Occasionally, however, some users have opted for an Eco analysis of small, discrete areas, such as a residential parcel or a commercial property. In this case, a complete inventory of all trees on the site makes more sense. Keep in mind, however, that data collection on each tree can be intensive, and sites with many trees will be very time consuming.

If you decide to do a plot-based sample inventory, skip to the Plot-Based Sample Inventory section. Otherwise, read the Complete Inventory section below and then go to **Phase II: Setting Up Your Project**.

## Complete Inventory

### Do you have an existing inventory?

Users interested in analyzing an existing inventory now have the option to import their existing complete inventory data into Eco. Follow the procedure outlined in **Phase IV > Adding Data**.



#### Eco Guide

For more information on importing a complete inventory, please see the **Eco Guide to Importing an Existing Inventory**.

## Plot-Based Sample Inventory

If you have decided to conduct a plot-based sample inventory of a large-scale study area, one of the most important steps in planning your project will be deciding how to create the random sample of plots. This section will help you understand elements of designing a sample such as stratification options and the number of plots needed. Your sample design decisions should be based on your desired project goals (i.e., the questions you are trying to answer), the available resources to manage and complete the project, and the desired precision of the model estimates.



### Tip

A technical article titled **Effect of Plot and Sample Size on Timing and Precision of Urban Forest Assessments** is available on the **i-Tree Eco and UFORE Resources page** provides more detail on the effects of sample design options on project precision and estimates.

## Will you stratify your sample?

For some studies, stratifying (subdividing) the study area into smaller units can help clarify differences across the area. For example, a stratified sample design with many plots may allow for comparison between land use types or neighborhoods and for greater precision of the model estimates. However, there will be associated project considerations such as the additional resources that will be needed to create maps, obtain permission to access properties, travel to plots, and collect field data. Conversely, a simple random sample with no stratification will not allow for comparison of sub-units but may still provide sufficient information to achieve the project objectives. Ultimately, the decision to stratify should be based on your current and future project objectives and your available resources.



### Caution

Eco projects can differ greatly. These are only guidelines and may not always be applicable to your project. Users are advised to consult with a statistician regarding their project sample design if they have specific needs or concerns.



### Tip

Stratification is handled differently for complete inventory projects. If you are doing a complete inventory project and are interested in collecting strata, please read more about it in the [Phase III > Choosing Your Data](#) section.

Review the following options before you decide whether or not to stratify your sample:



### Caution

Whether you pre-stratify or post-stratify, be sure not to choose too many categories or strata. The number of strata used in an Eco project is typically between 5 and 10 (for an analysis with 200 total plots) and cannot exceed 14. Too many categories can lead to analysis problems, as too few plots may fall in some strata. Each stratum should have at least 20 plots.

- **No stratification (simple random sample):** In a study with no stratification, plots are laid out randomly across the study area. This is a simpler method and offers the advantage of true randomness. True randomness, however, might not provide you with a true picture of your urban forest. Consider, for example, an extreme case of a city that is divided into two land uses: single-family residential (10% of total area) and industrial (90% of total area), with all of the trees in the residential district. A true random sample would place 10% of plots in residential areas and 90% of plots in the industrial area and would result in an incorrect picture of the urban forest. Since in most cities the trees themselves are not distributed randomly across land uses or neighborhoods, stratified sampling can offer a more accurate picture of the urban forest.
- **Stratification (stratified random sample):** In a study with stratification, the study area is subdivided into smaller units such as neighborhoods or land use classes. This can be done prior to determining your plots (pre-stratification) or after data is collected (post-stratification).
  - **Pre-stratification:** In this method, the study area is divided into smaller classes (or strata) prior to determining the plots. The number of plots in each stratum is based on which areas are believed to have the greatest variability or are of greatest interest. Often the majority of the plots are distributed within residential and forest/vacant land uses, as these areas tend to have the greatest density of trees. One disadvantage of stratification is that it might make revisiting the same plots in the future difficult if land uses change over time.

- **Post-stratification:** In this method, plots are first randomly distributed throughout the study area, and then strata boundaries are determined after data collection or in the future. Post-stratification allows you to analyze your data into multiple schemes. For example, you can use the same plots and field data to compare your results by land use types and then change the stratification to allow for analysis by political boundaries, neighborhoods, or management units as desired. Post-stratification allows you to manage the stratification boundary definitions to analyze change over time if your project will be reassessed in the future. For example, a land use category that is agricultural in an initial study may be developed in the future and reclassified as residential or commercial. Although post-stratification allows for greater flexibility, one disadvantage is that estimates may not be as accurate as a pre-stratified project where plot quantity is predetermined based on existing land types and desired objectives.

## How big will your plots be?

The standard plot size for an Eco analysis is a 0.1-acre circular plot with radius of 37.2 feet. If necessary, smaller or larger plots can be used – for instance, if you are analyzing a small area in which 0.1-acre plots would overlap.

## How many plots will you inventory?

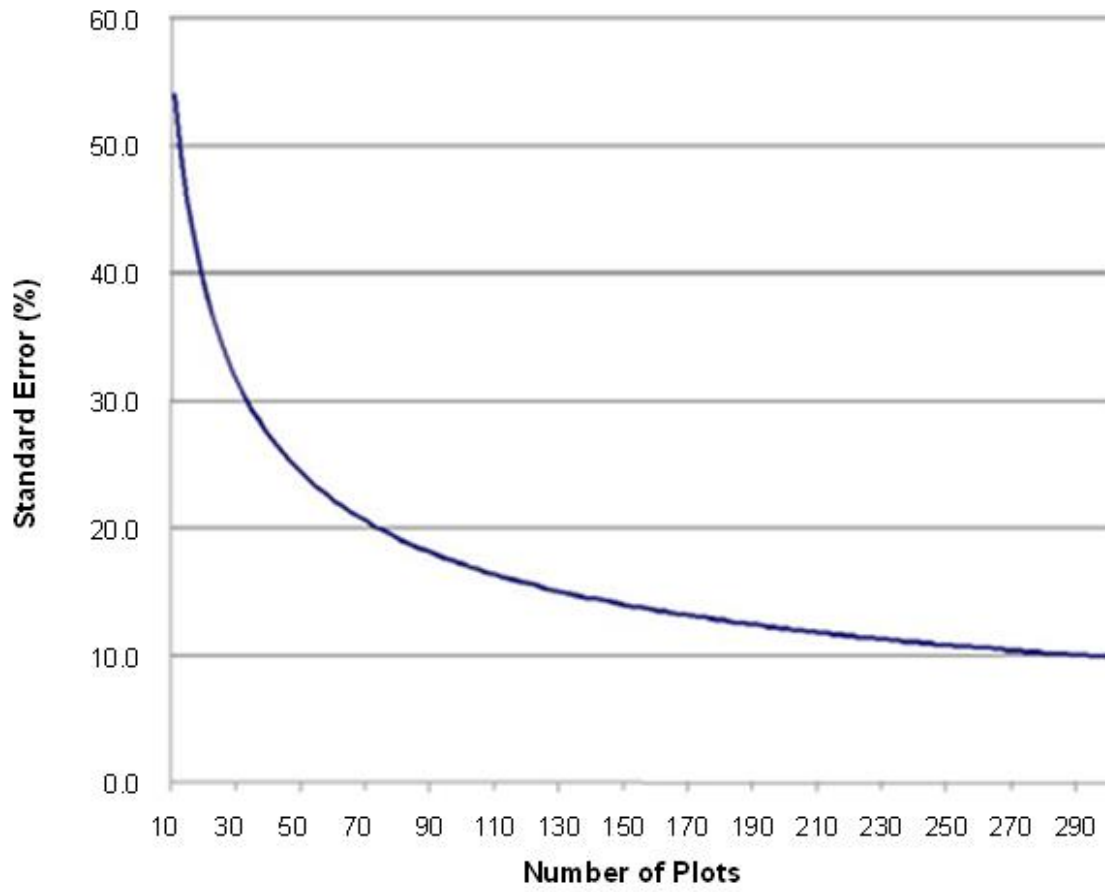
As a general rule, 200 plots (one-tenth acre each) in a stratified random sample (with at least 20 plots per stratum) will yield a standard error of about 10% for an estimate of the entire city. As the number of plots increases, the standard error decreases and you can be more confident in the estimate for the population. The graph below provides a rough estimate of how the standard error of the total number of trees in a city changes based on the number of plots sampled. Note how for the first 100 plots, the standard error drops more rapidly than for the second 100 plots, although the standard error continues to drop with increased sample size.

Keep in mind, however, that as the number of plots increases, so does the time and cost of field data collection. A crew of two people can typically measure 200 plots in one summer for a city with about 20% tree cover. The actual number of plots to be measured differs based on many factors, including the size of the city and tree cover.



### Tip

We recommend adding an extra 5-10% to your final number of plots. These extra plots can serve as replacements where another plot is inaccessible.



# Phase II: Setting Up Your Project

## Guide to Next Steps

So you've answered all of the questions in Phase I and are ready to set up your Eco project...

Use Table 1 to help you through Phase II. Read the questions in the table, choose the answer that applies to your project, and then follow the directions. This will help guide you to the steps that are relevant to your project.

**Table 1—Guide to Next Steps**

Questions	Answers	Directions
1. What are the boundaries of your study area?	1a. My study area is located in a <b>supported location</b> .	Continue to Question #2.
	1b. My study area is <u>not</u> located in a <b>supported location</b> .	Read about <b>The Data Gathering Step</b> below, then go to Question #2 of this table.
2. What type of inventory will you do?	2a. Complete inventory – I will sample all of the trees in my study area.	Continue to Question #3.
	2b. Plot-based sample inventory – I will sample the trees on plots distributed throughout my study area.	Skip to Question #4.
3. Do you have an existing inventory?	3a. Yes – I will be importing an existing inventory.	Go to <b>Phase IV</b> of this manual.
	3b. No – I need to collect field data.	Go to <b>Phase III</b> of this manual.
4. Will you stratify your sample?	4a. No – I am going to do a simple random sample.	Read about <b>The Sample Creation Step</b> below, then go to <b>Phase III</b> of this manual.
	4b. Yes – I am going to do a stratified random sample and <u>pre-stratify</u> my project.	Read about <b>The Sample Creation Step</b> , then go to <b>Phase III</b> of this manual.
	4c. Yes – I am going to do a stratified random sample and <u>post-stratify</u> my project.	Read about <b>The Sample Creation Step</b> , then go to <b>Phase III</b> of this manual.
5. How big will your plots be?	(as specified)	Use this information in the <b>Preparing for the Field</b> section of <b>Phase III</b> .
6. How many plots will you inventory?	(as specified)	Use this information in <b>The Sample Creation Step</b> below.

## The Data Gathering Step

Datasets that are used in conjunction with the collected field data include:

- Species information
- Location information
- Precipitation data
- Additional weather data
- Pollution data

These data are already incorporated in Eco for study areas in the U.S., Australia, Canada, Mexico, and most countries in Europe. Outside of these countries, you will need to provide your own additional data and submit it using the i-Tree Database application.



### Tip

Weather data is also used in i-Tree Eco and is available globally from the National Climatic Data Center (NCDC). All datasets from the NCDC with sufficient weather data have been incorporated in i-Tree Eco v6.0. Within Eco weather data quality is categorized as either Good, Fair, or Poor based on the number of missing hourly weather data. Currently, users will select from the available weather stations directly in the application and are not able to submit their own weather data.

i-Tree Database provides two functions. Users may choose to do one or both of the following while working with the tool:

- 1 View the Species or Location databases, or
- 2 Add Species, Location, Precipitation, or Pollution data to the databases.

The option to view the Species or Location databases allows users to search the data used by the i-Tree applications. Users can see what species and locations are currently available for modeling. For new projects, users should check if their location and species of interest are already in the database.

To get started, go to **i-Tree Database**. View the Species and Location databases in turn. Note if your project location and desired tree and shrub species are already in the database.



### Tip

Refer to i-Tree Database's "How to Use" text by going to **Menu > Help** at the top of the webpage.

To view available species:

- 1 Click on **View Database** at the top of the i-Tree Database webpage.
- 2 Select **Species** from the drop-down list.
- 3 Choose one of the following from the **Search by** drop-down:
  - a Scientific Name
  - b Common Name
- 4 Enter the name of the species that you are trying to find based on your selection in the **Search by** drop-down (i.e., scientific or common name).
- 5 Click **Go**.
- 6 The species that match your search will be listed below the search box.
- 7 Click **Clear** to discard the name that you entered and start over.

If you are having difficulty finding a species, try searching by both scientific and common name or entering only part of the name in the search box.

To view available locations:

- 1 Click on **View Database** at the top of the i-Tree Database webpage.
- 2 Select **Location** from the drop-down list.
- 3 Define a search area by:
  - a Selecting a nation from the **Search by** drop-down.
  - b Selecting a more precise area from the list, if additional drop-down menus appear.
- 4 Click **Go**.
- 5 All of the available locations in your designated search area will be listed below the search box.
- 6 Click **Clear** to discard the search area that you defined in the search box and start over.



### Tip

If you see incomplete or erroneous data in either the species or location information, let the i-Tree Team know! Go to the **Feedback** menu at the top of the i-Tree Database webpage and click on **Comments**.





### Tip

If you determine that you will need to submit additional data using i-Tree Database, consider doing that before you collect your field data. Data submitted in i-Tree Database will need to be vetted by the U.S. Forest Service before it can be made available in Eco. This will take some time.

## Species Information

The Species database includes species information for more than 6,500 tree and shrub species. Though adding new species for i-Tree Eco is optional, it is necessary for your analysis if any species in your local area are not already included.

By viewing the database, as described above, you can identify any missing tree or shrub species. To make those species available in Eco, collect the necessary information for those species and submit it using i-Tree Database. The required and optional species information are described in the **Eco Guide to International Projects**.

## Location Information



### Tip

Location information is required to run Eco in any location not yet in the database.

The Location database includes location information for places in the U.S., Australia, Canada, Mexico, South Korea, Colombia and most countries in Europe, and is expanding internationally. When you designed your Eco project, you should have decided on the location and boundaries of your study area. By viewing the database, as described above, you can identify if your location is already available in Eco. If it is, you do not need to submit any location information. Your Eco project can be run directly in Eco.



### Caution

If your location is already available in Eco, you will not need to submit any location information. However, be sure to read about the species information, precipitation data, pollution data, and valuation data in this guide as you may still want to submit that data.

To make the location for your project available in Eco, collect the necessary information for that location and submit it using i-Tree Database. The required and optional location information are described in the **Eco Guide to International Projects**.

## Precipitation Data



### Tip

Precipitation data is required for avoided runoff modeling and strongly recommended for pollution removal. Without precipitation data, the i-Tree Eco model cannot estimate avoided runoff. Pollution removal estimates for PM<sub>2.5</sub> also use precipitation data and without the data the model will likely overestimate PM<sub>2.5</sub> removal.

Internationally, precipitation data is often insufficient or absent from the weather data available in Eco. To supplement Eco's existing weather data with hourly precipitation data for your location, collect the necessary information for the precipitation data and submit it using i-Tree Database. More information about providing and formatting precipitation data is available in the **Eco Guide to International Projects**.

## Pollution Data



### Tip

Air quality data is required to run the pollution model. Without this data, pollution removal estimates will not be included in your results.

Hourly air quality data can be submitted for particulate matter less than 2.5 microns (PM<sub>2.5</sub>), carbon monoxide (CO), ozone (O<sub>3</sub>), nitrogen dioxide (NO<sub>2</sub>), and sulfur dioxide (SO<sub>2</sub>). Users may choose to provide hourly data for some or all of these pollutants. Pollutants for which no hourly data are submitted will be excluded from the analysis. To provide local pollution data for your location, collect the necessary information for the pollution data and submit it using i-Tree Database. More information about providing and formatting pollution data is available in the **Eco Guide to International Projects**.



### Caution

The pollutant particulate matter less than 10 microns ( $PM_{10}$ ) is no longer included because i-Tree Eco v6.0 analyzes particulate matter less than 2.5 microns ( $PM_{2.5}$ ) which is a subset of  $PM_{10}$ .  $PM_{2.5}$  is generally more relevant in discussions concerning air pollution effects on human health.

## Valuation Data

International users are also encouraged to provide local valuation data. Providing your own benefit prices allows users to localize their results. i-Tree Eco uses values from the scientific literature to estimate the economic value associated with tree benefits. Default values currently estimated are:

- **Carbon** – based on the U.S. Social Cost of Carbon (SCC)
- **Avoided runoff** – U.S. national average costs of stormwater control
- **Pollution removal** – based on U.S. median externality values for carbon monoxide, nitrogen dioxide, sulfur dioxide, particulate matter less than 2.5 microns, and ozone removal
- **Energy** – U.S. national average cost of electricity and fuels (e.g., heating oil, propane, natural gas)

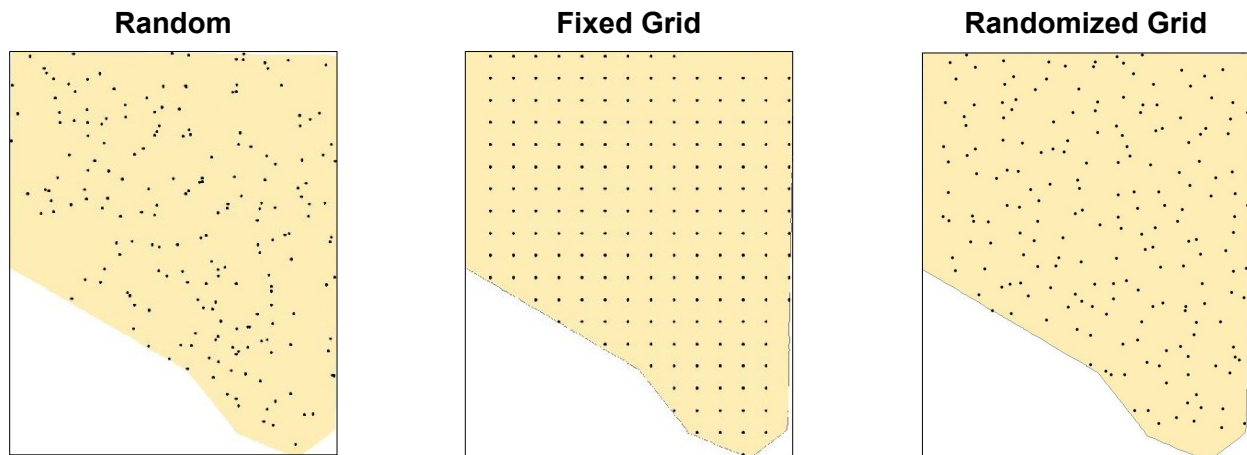
You can provide your own valuation data if you would like to localize your benefits estimates. If you do not provide your own valuation data, the default values will be used and converted to the local currency with a user-defined exchange rate. Unlike species, location, precipitation, and pollution data which are submitted in i-Tree Database, valuation data are entered directly in the i-Tree Eco application. By entering the data directly in Eco, it will be used for your project, but it will not be added to the databases. Read about adding valuation data in Eco under **Phase IV: Working with Eco > Navigating the User Interface**.

## The Sample Creation Step

If you have decided to do a plot-based sample project, then you will need to create your sample. This step will walk you through that process.

## Randomization

There are many ways that you can randomly distribute plots throughout your study area, whether you are working with a stratified or unstratified sample. Again, your decision should be based on the objectives of your study and the resources available to create the layout. Some Eco users collaborate with local universities or government agencies for assistance to create random plot layouts for their projects. Three randomization methods are as follows:



### **Random:**

For an unstratified or post-stratified sample, plots are laid randomly within the boundaries of the entire study area. For a pre-stratified sample, plots are laid randomly within the boundaries of each individual predetermined stratum.

### **Fixed Grid:**

First, random plots are created by laying out a fixed grid of points equidistant over the entire project area. Once the grid points have been laid out, they are numbered.

For an unstratified or post-stratified sample, plots are selected for the entire study area by choosing points from the grid using a random number generator, which can be found online or within software tools such as Excel. For a pre-stratified sample, plots are selected the same way, but for each predetermined stratum.

A potential disadvantage of this method, however, may occur if the grid unintentionally coincides with an existing city street grid. In that case, many plots may fall on similar land uses, which may not be desirable.

### **Randomized grid:**

In this method, an evenly spaced grid is laid over the study area. Then, plot points are selected randomly within each cell, which allows for a more even distribution of points throughout your study area with a greater degree of randomness than using a fixed grid.

One advantage of the randomized grid is that it allows for multiple post-stratification schemes because plots are more evenly distributed.

## Sample Creation Methods

Once you have designed your sample and made the necessary decisions about stratification, plot size, and number of plots, there are multiple methods available to help you create your plot sample. You can use any method you like, including paper maps and pencil, as long as it follows random sampling conventions.

Eco offers a random plot generator that allows you to create your sample right in the application itself. The plot generator works with Google Maps and utilizes study area boundaries that can be drawn by the user or supplied from an ESRI ArcGIS shapefile. This method can be used whether you have decided to stratify your sample or not. However, in the Google Maps Plot Generator, plots are distributed randomly and cannot be distributed on a fixed grid or randomized grid.

Eco plots can also be created in other programs and loaded into the application. In this case, you could use ESRI's ArcGIS software to generate your plots. The end result will be three files to load into Eco during project set up to create a plot list for your project configuration.

How you choose to create your sample ultimately depends on your randomization method, decisions about stratification, and available resources. For example, nearly all sample designs can be created using GIS, but the software can be expensive. The **random** type of random plot distribution is typically done by using Eco's Google Maps Plot Generator or with the aid of a GIS system. The **fixed grid** type of random plot distribution can be done manually on a map or by using GIS. The **randomized grid** type of random plot distribution would most likely require GIS.



### Eco Guide

Look at the **Eco Guide to Unstratified Samples** for directions on how to create an unstratified random sample of i-Tree Eco plots using Eco's Google Maps Plot Generator or ESRI's ArcGIS software.



### **Eco Guide**

Look at the **Eco Guide to Pre-stratified Samples** for directions on how to create a pre-stratified random sample of i-Tree Eco plots using Eco's Google Maps Plot Generator or ESRI's ArcGIS software.



### **Eco Guide**

Look at the **Eco Guide to Post-stratified Samples** for directions on how to create a post-stratified random sample of i-Tree Eco plots using Eco's manual plot creation function.

# Phase III: Collecting Your Field Data

## Choosing Your Data

### Required Variables

Deciding what data you will collect for your trees is an important step in planning your Eco project. The following two data variables must be collected for each tree (for complete and plot-based sample inventories):

- **Species:** Identify and record the species and genus names of each tree assessed.
- **Diameter at breast height (DBH):** Measure and record the tree stem diameter at breast height (4.5 feet above the ground) for each tree.



#### Caution

i-Tree Eco requires users to collect two tree measurements. While this approach allows users with limited existing inventories to run the model, it also has substantial limitations. The accuracy of ecosystem service estimates can be improved significantly by providing additional optional tree measurements.

Please read more about these data limitations in the [Eco Guide to Data Limitations](#).

In addition, the following two data variables must be collected for each plot (for plot-based sample inventories only):

- **Percent measured:** Identify the amount of the plot that the field crew is able to access and measure, either directly or by estimation, for each plot.
- **Percent tree cover:** Identify the amount of the plot covered by tree canopy (in percent) for each plot.

## Supplemental Analyses

i-Tree Eco provides data on the structure, function, and benefits of your urban forest, including:

- Number of trees
- Species composition
- Leaf area and biomass
- Pollution removal and value
- Carbon storage, sequestration, and value
- Hydrology effects and value
- Volatile organic compound emissions
- Oxygen production
- Ultraviolet (UV) effects



### Caution

Supplemental analyses will require you to collect more data than the variables described above. Consult Table 3 and Table 4 in the section that follows to guide your decision here.

There are several supplemental analyses that you can include in your custom Eco project. Review the following descriptions to help you decide which analyses are relevant to the goals of your project.

**Energy** (available for complete and plot-based sample inventories):

Trees located near buildings can affect the amount of energy used to heat or cool the structure by reducing air temperatures, blocking wind, and providing shade. If you would like to assess the effects your urban forest is having on energy consumption, you will need to collect information related to nearby buildings (i.e., distance and direction from trees). (Note: Energy effects are only calculated for residential buildings, maximum three stories, within 60 feet of trees).

**Avian Habitat** (available for plot-based sample inventories):

Eco estimates the suitability of an area to sustain the populations of nine different bird species based on the habitat features that relate to and influence the patterns of abundance for each species. These estimates are based on the species' range, local forest structure, and tree, shrub, and ground cover provided by the study area. To assess wildlife suitability, percent shrub cover and ground cover composition must be collected. Additional tree characteristics are highly recommended for better estimates.

**Forecast** (available for complete and plot-based sample inventories):



The Forecast model uses structural estimates generated by Eco along with growth and mortality rates to estimate what your urban forest will look like in the future. For detailed information see [Using the Forecast Model guide](#).

**Shrubs** (available for plot-based sample inventories):

Eco primarily analyzes the trees in your study area, but shrubs are another important resource and provide numerous benefits. If you would like to analyze the shrubs in your study area, you will need to collect information on the species, height, and cover of shrubs within the plots.

**Plantable space** (available for plot-based sample inventories):

If you would like to estimate the available planting space for your area, you will need to collect information on the fraction of each plot that is plantable.

**Pests (IPED)** (available for complete and plot-based sample inventories):

The i-Tree [Pest Detection Protocol](#) allows you to document signs and symptoms of tree pests and diseases as part of your Eco project. To complete this module, you will need to record information related to tree health in the field.



**Tip**

The Pest Detection protocol is independent of the existing Eco pest susceptibility report. The susceptibility report does not reflect field-collected data about actual risks and harm, but rather calculates the damage that a potential outbreak could have based on species diversity in your population. This susceptibility report will continue to be fully functional if you choose not to collect the supplemental pest detection data.

## Data Collection Options

There are a number of optional data variables that can be collected. Each variable you collect adds depth to the analysis but also adds to the cost of the project. Pay attention to which variables are required by the supplemental analyses that you choose to do.

<b>Table 3. Plot Information (plot based sample project).</b> <b>Use this table to help guide your field data collection decisions:</b> The Description column provides more information about each data variable. The extra model components shown in the right- hand columns require certain optional data to be collected. The optional data that must be collected for each extra model component are designated by an “x”.			Shrubs	Plantable space	Avian Habitat	Grass/Herbaceous pollution removal
Data Variables	Description					
<b>Minimum required fields</b>						
Percent measured	The amount of plot than can be accessed, measured, and/or included in this study					REQUIRED
Percent tree cover	The amount of the plot covered by tree canopy (in percent).					REQUIRED
<b>General fields</b>						
Land use	Actual land use	Land use type(s) that are seen in the field				
	Percent of plot	The amount of the plot area covered by each land use				
Percent shrub cover	The amount of the plot covered by shrub canopy (in percent)		x		x	
Percent plantable space	The amount of the plot area that is plantable for trees (i.e., plantable soil that is not under tree canopy or other overhead restrictions and where tree planting/establishment would not be prohibited due to land use, such as a baseball field)			x		
Plot address	Street address of plot or notes for locating plots in areas without street addresses					
Map coordinates	Longitude and latitude of plot center					
Reference objects	Object type	Visible landmark(s), such as a stop sign or permanent structure, that are seen when standing at plot center				
	Direction	The direction from the plot center to the reference object				
	Distance	The distance from the plot center to the reference object				
	DBH	Stem diameter measured at breast height (DBH) if the reference object is a tree				
Ground cover	Ground cover	Ground cover type(s) that are seen in the field			x	x
	Percent of plot	The amount of the plot area covered by each ground cover			x	x
Shrub details	Species	Name of shrub species	x			
	Height	Average height of shrub group (i.e., mass of shrubs of the same species)	x			
	Percent of area	The amount of the shrub area in the plot covered by each shrub group	x			
	Percent missing	The percent of the shrub group volume that is missing (i.e., not occupied by leaves)	x			

<b>Table 3 (continued). Tree Information (plot based sample project).</b> <b>Use this table to help guide your field data collection decisions:</b> The Description column provides more information about each data variable. The extra model components shown in the right-hand columns require certain optional data to be collected. The optional data that must be collected for each extra model component are designated by an “x”.			Energy	Pests (IPED)
Data Variables	Description			
<b>Minimum required fields</b>				
Species	Identify and record the species and genus names of each tree		REQUIRED	
DBH	Exact measurement or categories of the tree stem diameter at breast height for each tree		REQUIRED	
<b>General site fields</b>				
Land use	Land use type in which tree is located			
Status	Status of tree as planted or self-seeded			
Distance from plot center	The distance from the plot center to tree			
Direction from plot center	The direction from the plot center to tree			
Street tree/non-street tree	Identify if tree is a street tree or not (Y/N)			
Public/private	The classification of each tree as city managed (public) or not (private)			
Cover under canopy	Percent impervious	The percent of the area beneath the drip line of the tree that is impervious		
	Percent shrub	The percent of the area beneath the drip line of the tree that is shrub		
<b>Tree detail fields</b>				
Total tree height	Height from the ground to the top (alive or dead) of the tree			
Crown size	Live tree height	Height from the ground to the live top of the tree		
	Height to crown base	Height from the ground to the base of the live crown		
	Crown width	The width of the crown in two directions: north-south and east-west		
	Percent crown missing	Percent of the crown volume that is not occupied by branches and leaves		
Crown health	Dieback	Estimate of the percent of the crown that is composed of dead branches		
	Condition	Estimate of the condition of the crown recorded as 100 minus the percent of the crown composed of dieback (i.e., dead branches)		
Crown light exposure	Number of sides of the tree receiving sunlight from above (maximum of 5)			
Energy	Direction	Direction from tree to the closest part of the building	x	
	Distance	Shortest distance from tree to the closest part of the building	x	
<b>Management fields</b>				
Maintenance recommended	User defined general maintenance recommendations (e.g. routine prune) for the tree			
Maintenance task	User defined priority maintenance tasks (e.g., pest treatment) for the tree			

<b>Table 3 (continued). Tree Information (plot based sample project).</b> <b>Use this table to help guide your field data collection decisions:</b> The Description column provides more information about each data variable. The extra model components shown in the right-hand columns require certain optional data to be collected. The optional data that must be collected for each extra model component are designated by an “x”.			Energy	Pests (IPED)
Data Variables	Description			
<b>Management fields (continued)</b>				
Sidewalk conflict		Extent of damage to sidewalks from nearby trees defined by user		
Utility conflict		User defined potential or existing conflicts between tree branches and overhead utility lines		
Pests (IPED)	Signs and symptoms of tree stress	Absence or presence of signs and symptoms of dieback, epicormic sprouts, wilted foliage, environmental stress, or human stress		x
	Signs and symptoms of foliage/twigs	Absence or presence of signs and symptoms of defoliation, discolored foliage, abnormal foliage, or insect signs and extent of foliage affected		x
	Signs and symptoms of branches/bole	Absence or presence of signs and symptoms of insects or diseases on the branches/bole and location of signs or symptoms		x
User Tree ID		User created tree identifier, can be alphanumeric & non-alphanumeric		

<b>Table 4. Tree Information (complete inventory project).</b> <b>Use this table to help guide your field data collection decisions:</b> The Description column provides more information about each data variable. The extra model components shown in the right-hand columns require certain optional data to be collected. The optional data that must be collected for each extra model component are designated by an “x”.			Energy	Pests (IPED)
Data Variables	Description			
<b>Minimum required fields</b>				
Species	Identify and record the species and genus names of each tree		REQUIRED	
DBH	Exact measurement or categories of the tree stem diameter at breast height for each tree		REQUIRED	
<b>General site fields</b>				
Tree address	Street address of tree or notes for locating trees in areas without street addresses			
Land use	Land use type in which tree is located			
Strata	Sub-units by which study area are divided for analysis (e.g., land use, neighborhood)			
Status	Status of tree as planted or self-seeded			
Street tree/non-street tree	Identify if tree is a street tree or not (Y/N)			
Map coordinates	Longitude and latitude of tree			
Public/private	The classification of each tree as city managed (public) or not (private)			
<b>Tree detail fields</b>				
Total tree height	Height from the ground to the top (alive or dead) of the tree			
Crown size	Live tree height	Height from the ground to the live top of the tree		
	Height to crown base	Height from the ground to the base of the live crown		
	Crown width	The width of the crown in two directions: north-south and east-west		
	Percent crown missing	Percent of the crown volume that is not occupied by branches and leaves		
Crown health	Dieback	Estimate of the percent of the crown that is composed of dead branches		
	Condition	Estimate of the condition of the crown recorded as 100 minus the percent of the crown composed of dieback (i.e., dead branches)		
Crown light exposure	Number of sides of the tree receiving sunlight from above (maximum of 5)			
Energy	Direction	Direction from tree to the closest part of the building	x	
	Distance	Shortest distance from tree to the closest part of the building	x	
<b>Management fields</b>				
Maintenance recommended	User defined general maintenance recommendations (e.g. routine prune) for the tree			
Maintenance task	User defined priority maintenance tasks (e.g., pest treatment) for the tree			
Sidewalk conflict	Extent of damage to sidewalks from nearby trees defined by user			
Utility conflict	User defined potential or existing conflicts between tree branches and overhead utility lines			
			En	Pe

Table 4 (continued). Tree Information (complete inventory project). Use this table to help guide your field data collection decisions: The Description column provides more information about each data variable. The extra model components shown in the right-hand columns require certain optional data to be collected. The optional data that must be collected for each extra model component are designated by an “x”.				
Management fields (continued)				
Pests (IPED)	Signs and symptoms of tree stress	Absence or presence of signs and symptoms of dieback, epicormic sprouts, wilted foliage, environmental stress, or human stress		x
	Signs and symptoms of foliage/twigs	Absence or presence of signs and symptoms of defoliation, discolored foliage, abnormal foliage, or insect signs and extent of foliage affected		x
	Signs and symptoms of branches/bole	Absence or presence of signs and symptoms of insects or diseases on the branches/bole and location of signs or symptoms		x
User Tree ID		User created tree identifier, can be alphanumeric & non-alphanumeric		



### Tip

We strongly recommend collecting the following tree information, which will improve the accuracy of your Eco estimates! See the **Eco Guide to Data Limitations and Data Variables – Ecosystem Services Relationships** for more information.

- Actual land use
- Total tree height
- Live tree height
- Height to crown base
- Crown width
- Percent crown missing
- Crown light exposure

## Collecting Strata for Complete Inventories

One of the variables described in Table 4 is **strata**. This data can be collected for complete inventory projects and used to subdivide the trees in your study area into different strata or zones, such as land uses and neighborhoods.



### Tip

Stratification is handled differently for plot-based sample projects. If you are doing a plot-based sample project and are interested in stratifying your study area, please read more about it in the **Phase I > Plot-Based Sample Inventory** section.

For some studies, stratifying (subdividing) the trees based on zones can help clarify differences across the area. For example, a stratified complete inventory with many trees may allow for comparison between land use types or neighborhoods. The decision to stratify should be based on your current and future project objectives and your available resources.



### Eco Guide

Look at the **Eco Guide to Stratifying a Complete Inventory** for directions on how to pre-stratify or post-stratify your complete inventory project.

## Deciding How to Record Your Data

When you are ready to go out into the field and collect your tree data, you have several different options for recording your data. Review the descriptions and advantages/disadvantages of each before deciding how you will record your data in the field.

### Using the Mobile Data Collector

i-Tree Eco offers a mobile data collector for collecting data in the field. Projects can be conducted using a web-enabled mobile device. This functionality is not an app that you have to download from a store; it's a web-based inventory data collection form. This means that the only requirement is a device with a web browser that is HTML5 compatible. Compatible browsers include most recent versions of Chrome and Firefox (for Android phones and tablets), Safari (for iPhones and iPads), and to a lesser extent, Internet Explorer 9 and 10 (for Windows phones and tables). IE is limited by its ability to cache data offline – users must remain “connected” while collecting field data. For this reason, if you are using IE, you should be prepared to transfer your data from your mobile device to the server frequently and recognize that a lost data connection means all data since your last submission will be lost.



### Tip

For a running list of compatible devices, see [i-Tree system requirements](#).

### Advantages

- Easy data importing to Eco

### Disadvantages

- Requires additional technology in the field – must have a web-enabled mobile device, such as a smartphone or tablet

## Using Paper Forms

i-Tree Eco offers paper forms for collecting data in the field which provides a simple, inexpensive method of recording data.

### Advantages

- Easy to use
- Does not require additional technology in the field – just paper and pen or pencil!

### Disadvantages

- Requires manual data entry for bringing data into Eco

## Additional Options

### Non-i-Tree Inventory Platforms

If your community lacks funding to support the use of mobile devices or you simply prefer to use an alternative method, that's no problem. Inventories can be conducted using paper forms or spreadsheets of your own design, proprietary inventory tools, etc. The desktop Eco application includes a user-friendly input form to simplify the data entry process. Exploring the manual data entry process in the application may help guide you if you decide to use a non-i-Tree platform.



## Preparing for the Field

Your final step before you are ready to collect your field data is to set up your data collection materials. If you are doing a plot-based sample project, read the Mapping Field Plots section below. Otherwise, skip ahead to Getting Started in Eco.

### Mapping Field Plots

For sample inventory projects, one of the final steps before data collection can begin is to create maps identifying the physical location of the plots. If the random plots were created in GIS, the plot shapefile can be overlaid on digital aerial photos of the study area to aid crews in locating plots and plot centers on the ground.

Similarly, if you created your random points using the Google Maps Plot Generator, the points can be incorporated into GIS and overlaid on digital aerial photos. In addition, detailed plot maps can be very useful in aiding crews in estimating plot cover percentages. If digital photos are not available or if the plots were created manually, they can be located on a digital land use, road map, or on paper maps. Plot centers and plot boundaries should be identified.



#### Eco Guide

Directions for creating your random sample using the Google Maps Plot Generator or ESRI's GIS are available in the following Eco Guides:

- **Eco Guide to Unstratified Samples**
- **Eco Guide to Pre-stratified Samples**

### Getting Started in Eco

If you have decided to use the Eco mobile data collector or paper forms, we recommend you proceed as follows:

Begin working with Eco to create a new project. Click on your computer's **Start button > (All) Programs > i-Tree > i-Tree Eco v6**.

To start a new project:

- 1 Click **File > New Project**.
- 2 Define the project type by choosing from the drop-down list.
- 3 Browse to the folder where you would like to save your project, enter a file name, and click **Save**.

To configure your project:

- 1 Click on the **Project Configuration** tab.
- 2 Click on the **Project Definition** function.
- 3 Work through the **Project Settings**, **Location**, and **Data Collection Options** tabs from left to right.
- 4 Close the **Project Definition** function when you are finished by clicking on the **OK** button in the upper right-hand corner to save your settings.
- 5 Work from left to right through the **Project Configuration** tab to provide additional information for the functions that are relevant to your project.



#### Tip

Use the information in **Phase IV > Navigating the User Interface** to help you navigate through the functions in the **Project Configuration** tab.



#### Tip

While working in Eco, use the on-screen help text in the panel on the left side of the window. This help text will provide step-by-step directions for using each button and function.

## Preparing Paper Forms

If you have decided to collect your data using Eco's paper form and you have already configured your project (as described in **Getting Started with Eco** above):

- 1 Click on the **Data** tab.
- 2 Click on the **Paper Form** function.

Links for the various paper data collection forms will appear in the action panel to the right. Click on a link to launch the form in your web browser. The following types of forms are available:

- For users doing a **complete inventory** project, there is a single data sheet in xlsx format for recording tree data.
- For users doing a **plot-based sample** project, there are two data sheets. One in xlsx format for recording tree data and another in doc format for recording plot data.
- For users doing the supplemental **pest (IPED)** analysis, there is a single data sheet in xlsx format for recording pest observations.

## Preparing the Mobile Data Collector



### Caution

Before you can start working with the mobile data collector, you must submit your project configuration. If you do not submit your project, you will not be able to access the web form from your mobile device.

If you have decided to collect your data using Eco's mobile data collector and you have already configured your project (as described in **Getting Started with Eco** above):

- 1 Click on the **Data** tab.
- 2 Click on the **Submit to Mobile** function.
- 3 Enter and confirm your email address in the spaces provided.
- 4 Enter and confirm your password in the space provided.
- 5 Check the box next to the record(s) that you would like to submit.
- 6 Click **Submit Project**.
- 7 Check the email account that you provided for instructions on accessing the mobile data collector for your project.

## Going Out in the Field

By this point in the Eco project phases, you should have:

- Chosen the data variables that you will collect in the field
- Decided how you will collect and record your field data
- Designed and created your plot sample (for plot-based sample projects only)
- Prepared your data collection materials to go out into the field

Now it's time to actually collect your field data! Use Eco's **Field Manual** to guide you as you collect and record your data.

# Phase IV: Working with Eco

## Getting to Know Eco

Throughout this section of the manual, we will refer to certain components of the i-Tree Eco application. Here's a guide to show you what the components of the Eco window look like. See the **Glossary** for more details!

### File menu




Create new, open, save, and manage your Eco projects here.

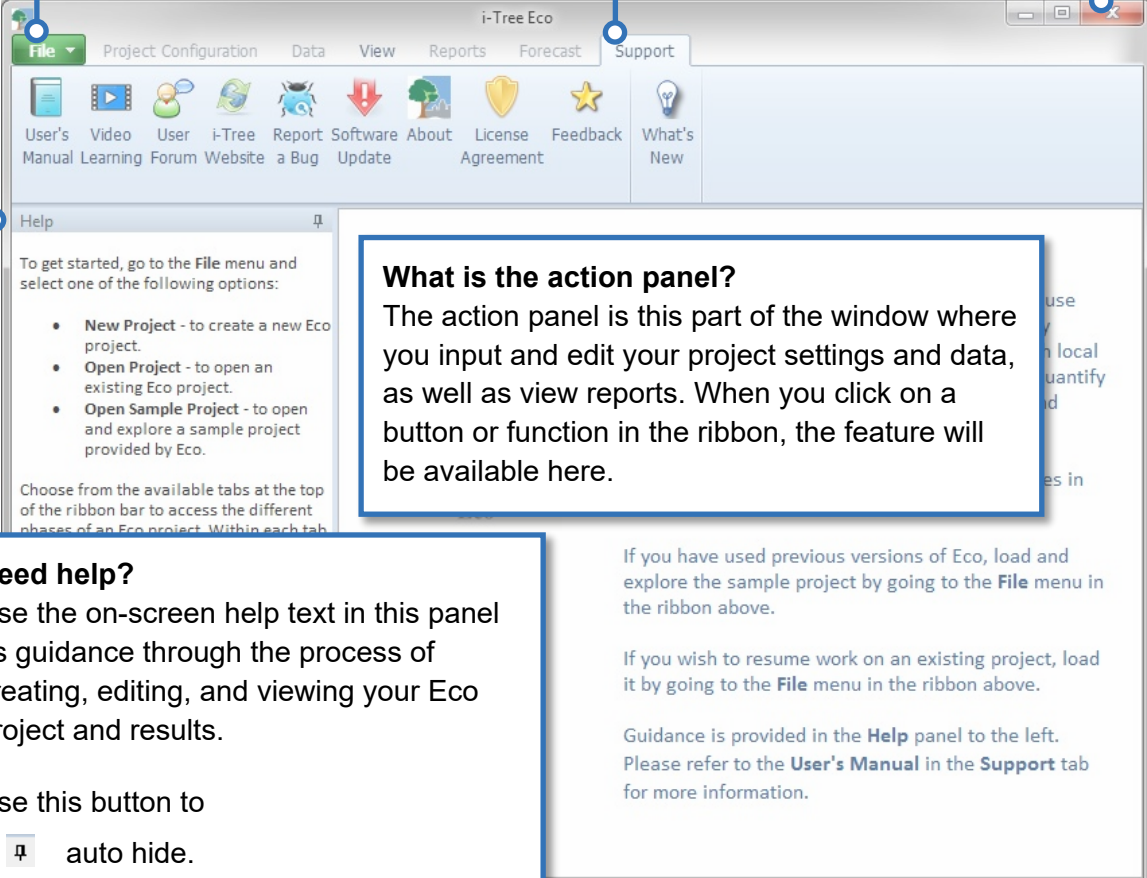
### Tabs

Select one of the tabs on the ribbon to display the buttons and functions available.

### Window display

Use these buttons to

-  minimize;
-  restore down/maximize; or
-  close the window.



The screenshot shows the i-Tree Eco application window. At the top, there is a menu bar with 'File', 'Project Configuration', 'Data', 'View', 'Reports', 'Forecast', and 'Support'. Below the menu bar is a ribbon with various icons and labels: 'User's Manual', 'Video Learning', 'User Forum', 'i-Tree Website', 'Report a Bug', 'Software Update', 'About', 'License Agreement', 'Feedback', and 'What's New'. On the left side, there is a 'Help' panel with text and a list of options: 'New Project', 'Open Project', and 'Open Sample Project'. On the right side, there is a 'Support' panel with text and a 'What's New' button. Callout boxes are connected to various parts of the window: 'File menu' points to the File menu; 'Tabs' points to the ribbon; 'Window display' points to the window title bar; 'What is the action panel?' points to the ribbon area; and 'Need help?' points to the Help panel.

### What is the action panel?

The action panel is this part of the window where you input and edit your project settings and data, as well as view reports. When you click on a button or function in the ribbon, the feature will be available here.

### Need help?

Use the on-screen help text in this panel as guidance through the process of creating, editing, and viewing your Eco project and results.

Use this button to

-  auto hide.

If you have used previous versions of Eco, load and explore the sample project by going to the **File** menu in the ribbon above.

If you wish to resume work on an existing project, load it by going to the **File** menu in the ribbon above.

Guidance is provided in the **Help** panel to the left. Please refer to the **User's Manual** in the **Support** tab for more information.

## Navigating the User Interface

The Eco application is so versatile that rather than provide step-by-step directions we have chosen to explain what you can do in each tab and function and why that might be important to you. Review the information in this section to help you navigate through the application's user interface.



### Tip

While working in Eco, use the on-screen help text in the panel on the left-hand side of the window. This help text will provide step-by-step directions for using each button and function.



### Caution

This is a complete list of tabs, functions, and buttons that are available for the Eco user interface. Depending on whether you are doing a plot-based sample inventory or a complete inventory, certain functions may not appear or may be “greyed out.” Do not worry about the “missing” functions – they are not available because they are not relevant to your specific project.



### Eco Guide

i-Tree Eco provides example projects that you can look at to explore the application before working with your own project. Check out the [Eco Guide to Exploring Example Projects](#) for more details.

## File Menu



### **New Project**

Description: This menu option allows you to create a new Eco project.



### **Open Project**

Description: This menu option allows you to open an existing Eco project.



### **Open Example Project**

Description: This menu option allows you to open one of Eco's example projects.

Why It's Important: i-Tree Eco provides example complete inventory and plot-based inventory projects that you can view to become more familiar with the Eco application.



### **Save Project (Automatic).**

Description: This option is disabled, but included in the menu to indicate that your Eco project is automatically saved as edits are made.



### **Save a Copy**

Description: This menu option allows you to save your open project under a new name.

Why It's Important: This feature is especially useful if you want to view the same project in different ways. For example, let's say you decide to post-stratify your results. You can try stratifying your plots several different ways and save your Eco project each time you stratify using the **Save a Copy** feature.



### **Pack Project**

Description: This menu option allows you to put all of your project materials into a single compressed folder that saves storage space and can be shared easily.



### **Close Project**

Description: This menu option allows you to close your open project without closing the Eco application.



### **Exit**

Description: This menu option allows you to close the Eco application.

## Project Configuration

On this tab, you can set up your new i-Tree Eco project, make changes, or view the settings that you provided for an existing project.

### Project Definition



#### Project Definition

Description: In this function, you can identify many of your most important project settings, including project name, series, and year, the location of your study area, and what data variables you will be collecting.

Why It's Important: You can't run Eco without filling out the forms here. Plus, you've probably spent a lot of time planning and designing your project. All of the decisions that you have made to customize your project are used to inform the Eco model and must be entered here.



#### Tip

Remember the data collection decisions that you made in **Phase III: Collecting Your Field Data**? This is where that data is specified in the Eco application.

### Define Data Fields



#### Land Use

Description: In this function, you can view the actual land use classes in your study area. Eco provides 13 default land use classes that you can choose to work with or create your own list of custom land use classes.

Why It's Important: If you have decided to collect land use data, which is optional, this function is a good place to reference your default options or to customize the list to better suit your project.



#### Caution

The actual land uses should not be confused with your project strata. If you are choosing to stratify by land use, those fields should be defined in the **Project & Strata Area** function.



## Ground Cover

Description: In this function, you can view the ground cover classes in your study area. Eco provides 11 default ground cover classes that you can choose to work with or create your own list of custom ground cover classes.

Why It's Important: If you have decided to collect ground cover data, which is optional, this function is a good place to reference your default options or to customize the list to better suit your project. Grass, unmaintained grass, and herbs factor in to pollution modeling for U.S. projects. Pollution results will be affected by how these ground covers are categorized in the field or if new fields are mapped to these ground cover designations.



## DBH Class

Description: In this function, users can view Eco's default dbh classes or enter custom classes. There are 10 default dbh classes users can choose from when identifying dbh during data collection. Users can choose to customize these classes using the tools in the **Actions** group of the ribbon.

Why It's Important: You don't have to do anything in this function unless you want to edit the dbh classes. Measuring dbh is mandatory and this function is a good way to customize your project. The dbh classes that are displayed here will be available in the mobile data collector if you collect your field data using a mobile device, as well as in the **Data** tab of the ribbon.



## Crown Health

### Condition or Dieback

Description: In this function, you can view Eco's default condition or dieback classes depending on the option you chose under the Project Definition > Data Collection Options window. If the default classes do not work for your project, in this function, you can choose to enter custom classes. There are 22 default classes that you can choose from. You can also choose to add or edit the list of classes using the tools in the **Actions** group of the ribbon.

Why It's Important: You don't actually have to do anything in this function unless you want to edit your classes. Assessing crown health is optional and this function is simply a good place to reference if you want a refresher of your default or user-defined options. The classes that are displayed here will be available in the mobile data collector if you collect your field data using a mobile device, as well as in the **Data** tab of the ribbon.





## Maintenance

- **Maintenance Recommended**

Description: In this function, you can view broad types of recommended maintenance that can be specified during data collection in the field. There are six default maintenance recommendations (e.g., small tree routine), but we strongly encourage users to define maintenance recommendations that are relevant to their project goals.

Why It's Important: This data allows you to categorize the management needs of your trees. This is where you can view the default classes or customize the list to better suit your study area. The recommended maintenance options that are displayed here will be available in the mobile data collector if you collect your field data using a mobile device, as well as in the **Data** tab of the ribbon.

- **Maintenance Task**

Description: In this function, you can view priority maintenance tasks that can be specified during data collection in the field. There are eight default maintenance tasks (e.g., crown clearing), but we strongly encourage users to define maintenance tasks that are relevant to their project goals using the tools in the **Actions** group of the ribbon.

Why It's Important: This data allows you to categorize the management needs of your trees. This is where you can view the default classes or customize the list to better suit your study area. The maintenance task options that are displayed here will be available in the mobile data collector if you collect your field data using a mobile device, as well as in the **Data** tab of the ribbon.

- **Sidewalk Conflict**

Description: In this function, you can view possible sidewalk conflicts with nearby trees that can be recorded during data collection in the field. There are three default measurements of sidewalk heaving (e.g., > 1½ inches), but we strongly encourage users to define sidewalk conflicts in a way that is relevant to their project goals using the tools in the **Actions** group of the ribbon.

Why It's Important: This data allows you to categorize the management needs of your trees. This is where you can view the default classes or customize the list to better suit your study area. The sidewalk conflict classes that are displayed here will be available in the mobile data collector if you collect your field data using a mobile device, as well as in the **Data** tab of the ribbon.

- **Utility Conflict**

Description: In this function, you can view possible conflicts between tree branches and overhead utility lines that can be recorded during data collection in the field. .

There are three default utility conflicts (e.g., present and conflicting), but we strongly encourage users to define utility conflicts in a way that is relevant to their project goals using the tools in the **Actions** group of the ribbon.

Why It's Important: This data allows you to categorize the management needs of your trees. This is where you can view the default classes or customize the list to better suit your study area. The utility conflict classes that are displayed here will be available in the mobile data collector if you collect your field data using a mobile device, as well as in the **Data** tab of the ribbon.



### **Custom Fields**

Description: In this function, you can define the categories associated with your custom fields using the tools in the **Actions** group of the ribbon. Your custom fields are defined in the **Project Definition** function and would be included in your data collection out in the field.

Why It's Important: This is a great way to customize your Eco project! You may add up to three additional custom fields to describe your assessed trees in even more detail. The classes that you define here are available in the mobile data collector if you collect your field data using a mobile device, as well as in the **Data** tab of the ribbon.

## **Define Plots**



### **Load from File**

Description: This function provides one of the methods for identifying your sample plots in Eco. Here you can load the three files that are necessary to identify your sample plots.

Why It's Important: If you have chosen to do a plot-based sample inventory, you will need to create a sample and pass that information to the application. More importantly, if you have created your sample using ArcGIS software, this function provides the means by which to load the files that you created in GIS.



### **via Google Maps**

Description: This function provides one of the methods for identifying your sample plots in Eco. The Google Maps Plot Generator creates your plot sample directly in Eco!

Why It's Important: If you have chosen to do a plot-based sample inventory, you will need to create a sample and pass that information to the application. More importantly, if you have chosen to do a simple or stratified random sample, this tool provides an easy way to create your sample.



### **User Defined**

Description: This function provides one of the methods for identifying your sample plots in Eco.

Why It's Important: If you have chosen to do a plot-based sample inventory, you will need to create a sample and pass that information to the application. This option allows you to define your plot sample manually by simply entering the plot size and number of plots that you would like to add to each strata.

## Project & Strata Area



### Project & Strata Area

Description: In this function, you can add your project or strata area and view or edit the strata that you will be using for your project. Stratifying your study area allows you to subdivide the study area into smaller units, such as land use classes or political boundaries, so that you can compare urban forest effects between each stratum.

Why It's Important: The size entered in the "Area" column is used to calculate the per unit area, or density, estimates that are included in some of the Eco results on the **Reports** tab. The more accurate the area entered here, the better your density estimates will be. You can use the tools in the **Actions** group to add or delete strata. This is also simply a good place to reference the strata for your project! If you are doing a plot-based sample project, the strata that you define here will be visible in the **User Defined** function. The strata that you define here are also available in the mobile data collector if you collect your field data using a mobile device, as well as in the **Data** tab of the ribbon.

## Export



### CSV

Description: This function allows you to export tabular data from an open function to a "comma separated values" (csv) file format.

Why It's Important: Data exported as a csv file are compatible with Microsoft Excel and text editors such as WordPad and Notepad. This function allows you to save and organize your project data however you choose.

## Actions

The **Actions** group is available in the ribbon bar when you are working in a function that requires the following tools:



### New

Description: This tool allows you to add a new class or category of data to the table that is open in the action panel.



### Undo

Description: This tool allows you to undo the last action that you took.



### Redo

Description: This tool allows you to redo an action that you had just negated using the Undo tool.



### Restore Defaults

Description: This tool will restore any default classes or categories of data to the table that is open in the action panel.



### Delete

Description: This tool allows you to delete a selected class or category of data from the table that is open in the action panel.

## Editing Mode



### Editing Mode

Description: This tool allows you to work in Editing mode so that you may edit or add to the project settings in the **Project Configuration** tab.

Why It's Important: After you run the Eco model in the **Reports** tab, the **Project Configuration** tab will be locked so it cannot be edited unintentionally. However, the project settings that you enter in the **Project Configuration** tab may be edited with caution. In order to do this, you will need to switch to Editing mode by clicking on the **Editing Mode** function. *If you choose to work in Editing mode, you will need to submit your data to the server again and retrieve your updated results.*

## Data

On this tab, you can add, edit, or view your inventory data (i.e., the plot and/or tree data that you collect in the field).

## Data Collection



### Submit to Mobile

Description: This function submits your project configuration settings to the mobile data collector. If you are not planning to record your data in the field using the mobile data collector, then you do not need to use this tool.

Why It's Important: Your project configuration is unique to your project. Submitting your project settings using this tool ensures that your mobile data collector has the correct classes or categories when you go into the field to collect your data. *If you do not first submit your project configuration using this tool, you will not be able to access the mobile data collector.*



### Retrieve from Mobile

Description: This function imports your inventory data from the mobile data collector into Eco. If you did not record your data in the field using the mobile data collector, then you will not need to use this tool.

Why It's Important: If you recorded your data in the field using the mobile data collector, this is how you will import your data. This tool offers an easy way of bringing your inventory data into the application.



### Paper Form

Description: This function displays the paper data collection forms provided by Eco.

Why It's Important: If you have decided to collect and record your field data on paper forms, this is where you will find Eco's ready-made forms so you can save and print them.



### Import

Description: This tool allows you to import an existing tree inventory.

Why It's Important: Though this tool is only available for complete inventory projects, it allows those users with existing tree data to import it into Eco and make use of the model.

## Inventory Data



### Plots

Description: Field data collected for each plot are entered in this function. You can also edit the plot data using the tools in the **Actions** group of the ribbon once it has been entered or imported here.

Why It's Important: If you are doing a plot-based sample project, this is where you can manually enter or edit your plot data. If you have already entered or imported your data, this function can simply be a place for viewing that data.



### Trees

Description: Field data collected for each tree are entered in this function. You can also edit the tree data using the tools in the **Actions** group of the ribbon once it has been entered or imported here.

Why It's Important: For all projects, this is where you can manually enter or edit your tree data. If you have already entered or imported your data, this function can simply be a place for viewing that data.

### **Shrubs**

Description: Field data collected for shrubs are entered in this function. You can also edit the shrub data using the tools in the **Actions** group of the ribbon once it has been entered or imported here.

Why It's Important: If you are doing a plot-based sample project and collected shrub data, this is where you can manually enter or edit that data. If you have already entered or imported your data, this function can simply be a place for viewing that data.



### **Check Data**

Description: The field data that you have imported or manually entered in the **Plots**, **Trees**, and/or **Shrubs** functions can be validated using the **Check Data** function. When you click on the **Check Data** function, Eco will check for invalid data and report issues that need to be corrected before you can submit your data to the server and retrieve your results.

## Inventory Value



### **Benefit Prices**

Description: In this function, you can view or customize the benefit prices that will be used by the Eco model to estimate the economic value associated with the environmental benefits, such as carbon storage, provided by your urban forest.

Why It's Important: This is a great way to localize your results! Many of the default benefit prices available for Eco come from the scientific literature. This function allows you to enter data that is more relevant to your study area. Benefit prices may be edited at any time without requiring you to submit your project to the server again. The change to your monetary values will be reflected in the **Reports** tab immediately. The CSV button can be used to export benefit prices.



#### **Tip**

International Users: Remember the valuation data you collected in **Phase II: Setting Up Your Project**? The **Benefit Prices** function is where you will input your local values for estimating the economic value associated with certain tree benefits. Don't forget – if you are choosing to use Eco's default values, supply an exchange rate so your results will be given in your local currency.



## Annual Costs

Description: In this function, you can include the annual costs associated with your project. There are no default costs for this function because they can vary significantly from place to place. The values that you provide here are primarily the annual costs associated with the management of your urban forest, such as tree planting or removal. However, there may be less obvious tree-related costs to consider, such as sidewalk repair costs or litigation fees.

Why It's Important: Providing annual cost information makes it possible to calculate a benefit-cost ratio which can be a valuable public-policy tool. Annual costs may be edited at any time without requiring you to submit your project to the server again. The change to your annual costs will be reflected in the **Reports** tab immediately.

## Report Classes



### DBH Class

Description: In this function, users can view Eco's default report dbh classes or enter custom report classes. There are 10 default dbh report classes users can choose from when identifying dbh classes to view in reports. Users can choose to customize these classes using the tools in the **Actions** group of the ribbon.

Why It's Important: You don't have to do anything in this function unless you want to edit the dbh report classes. Measuring dbh is mandatory and this function is a way to customize your project. The dbh classes that are displayed here will be used in the reports.



### Crown Health

#### Condition or Dieback

Description: In this function, you can view Eco's default condition or dieback report classes depending on the option you chose under the Project Definition > Data Collection Options window. If the default report classes do not work for your project, in this function, you can choose to enter custom classes. There are 7 default report classes that you can choose from. You can also choose to add or edit the list of report classes using the tools in the **Actions** group of the ribbon. Custom report classes are limited to 10.

Why It's Important: You don't actually have to do anything in this function unless you want to edit the report classes. Assessing crown health is optional and this function is where you can view default report classes or create your own. The report classes that are displayed here will be used in the reports.

## Export



### CSV

Description: This function allows you to export tabular data from an open function to a “comma separated values” (csv) file format.

Why It’s Important: Data exported as a csv file are compatible with Microsoft Excel and text editors such as WordPad and Notepad. This function allows you to save and organize your project data however you choose.



### KML

Description: This function allows you to export tabular data from an open function to a “keyhole markup language” (kml) file format.

Why It’s Important: If you have recorded the map coordinates of plot centers and/or trees, you will be able to make use of Eco’s **KML** function. Data exported as a kml file are compatible with software programs that include Google Earth and ArcGIS. This function allows you to view plot and tree data locations spatially.

## Actions

The **Actions** group is available in the ribbon bar when you are working in a function that requires the following tools:



### New

Description: This tool allows you to add a new class or category of data to the table that is open in the action panel.



### Undo

Description: This tool allows you to undo the last action that you took.



### Redo

Description: This tool allows you to redo an action that you had just negated using the Undo tool.



### Delete

Description: This tool allows you to delete a selected class or category of data from the table that is open in the action panel.



## Editing Mode



### Editing Mode

Description: This tool allows you to work in Editing mode so that you may edit or add to the inventory data in the **Data** tab.

Why It's Important: After you run the Eco model in the **Reports** tab, the **Data** tab, with the exception of the **Benefit Prices** and **Annual Costs** functions, will be locked so it cannot be edited unintentionally. The data that you enter in the **Data** tab may still be edited with caution. In order to do this, you will need to switch to Editing mode by clicking on the **Enable Mode** function. *If you choose to work in Editing mode, you will need to submit your data to the server again and retrieve your updated results.*

## View

On this tab, you can specify how you would like to view your project data, including which dataset you would like to view and the style of the user interface.

### Specify Data

#### Specify Data

Description: This function offers three drop-down menus for you to specify which dataset you would like to view in the application.

Why It's Important: i-Tree Eco projects are stored in databases that may contain multiple datasets. Use this function to specify the project, series, and year of the dataset that you want to view in Eco.

## Species



### Species Codes

Description: This function is a lookup tool that identifies the common name, scientific name, and species code associated with a tree species when you supply any one of the three descriptors. For example, if you know that the common name of one of your tree species is Red Maple, then supplying that name in the lookup tool will provide you with the corresponding species code and scientific name.

Why It's Important: i-Tree Eco features data for over 7,000 tree and shrub species, each of which is associated with a particular common name, scientific name, and species code. This lookup tool enables you to find those descriptors easily.



## Species Lists

Description: This function includes a table that identifies the species code, scientific name, and common name of all of the tree species that are available in Eco. This list can be exported to a “comma separated values” (csv) file for use outside of Eco.

## Export



### CSV

Description: This function allows you to export tabular data from an open function to a “comma separated values” (csv) file format.

Why It’s Important: Data exported as a csv file are compatible with Microsoft Excel and text editors such as WordPad and Notepad. This function allows you to save and organize your project data however you choose.

## Configuration

### Style

Description: The user interface of the Eco application can be customized by choosing one of the different color schemes from the drop-down list.

### Always Minimize Help Panel

Description: Help text is available in the panel on the left-hand side of the i-Tree Eco window. This function allows you to have that help panel minimized at all times. You can also choose to maximize the help panel again by deselecting this option.

## Reports

On this tab, you can run the i-Tree Eco model and view your results. Eco features a number of charts, tables, and reports to summarize the structure, function, and ecosystem services provided by the urban forest in your study area.



### Tip

Go to **Phase V: Viewing Your Reports** to explore all of the reports that are available for your custom Eco project in more detail.

## Project Metadata



### Project Metadata

Description: This report summarizes important metadata for your project, including the date your project was created, number of plots and/or trees, pollution and weather data used, benefit prices, and available reports.

Why It's Important: The **Project Metadata** report is a good place to check if and when you ran the model and view some of the key information about your project.

## Submit Data for Processing



### Submit Data for Processing

Description: This function begins data processing. When you click on this button, your project settings and inventory data will be sent to the i-Tree server where the Eco model will run.

Why It's Important: After you have established your project settings in the **Project Configuration** tab and entered your field data in the **Data** tab, it is time to run the i-Tree Eco model.

## Track & Retrieve Results



### Track & Retrieve Results

Description: This function is essential after data processing. When you click on this button, you can retrieve your results from the i-Tree server and view your Eco reports.

Why It's Important: After the i-Tree Eco model has run on the server you can retrieve the results for your project – the big payoff for all your efforts! This function also allows you to track the status of your data submission and see where you are in the processing queue.



### Caution

If you make changes in the **Project Configuration** or **Data** tabs, you will need to send your data to the server again and retrieve your results so that the provided reports will be populated.

## Formatted Reports



### Written Report

Description: This is a summary, narrative report of your project results. This report gives a great overview of the trees in your study area, while describing urban forest benefits and the basic methodology used in i-Tree Eco.



### Composition and Structure

Description: The standard reports in this drop-down menu summarize information about the composition and structure of the trees in your study area, including DBH (diameter at breast height), condition, and leaf area and biomass. These reports are in tabular or chart format and can be saved or printed for use outside of the Eco application.



### Benefits and Costs

Description: The standard reports in this drop-down menu summarize information about the benefits and costs of the trees in your study area, including carbon storage and sequestration, energy effects, and pollution removal. These reports are in tabular or chart format and can be saved or printed for use outside of the Eco application.



### Individual Level Results

Description: The standard reports in this drop-down menu summarize information about composition and structure of plots and individual trees sampled in your study area, tree benefits and costs, and plot, shrub, and tree comments. These reports are in tabular or chart format and can be saved or printed for use outside of the Eco application.



### Air Quality Health Impacts and Values

Description: This report is available for sample plot based projects and complete inventory projects when a project area is defined. It provides estimates of the number of adverse health incidents avoided due to changes in pollutant concentration levels, as well as the economic value of reduced health incidents. This report is in tabular format and can be saved or printed for use outside of the Eco application.



### Pest Analysis

Description: The standard reports in this drop-down menu summarize information about the pest susceptibility of trees in your urban forest, as well as signs and symptoms of pests in your study area. These reports are in tabular or chart format and can be saved or printed for use outside of the Eco application.



### Tip

Reports summarizing documented signs and symptoms of tree pests and diseases require additional pest data to be collected. Please refer back to **Phase III: Collecting Your Field Data** for more information on the requirements for the supplemental pest analysis.

## Charts



### Pollution and Weather

Description: The standard reports in this drop-down menu summarize information about the pollution and weather data used for your project, such as air pollutant concentration, rain, and temperature. There are many other reports found here such as air quality improvement, transpiration, avoided runoff, and isoprene emitted by trees. These reports are in tabular or chart format and can be saved or printed for use outside of the Eco application.

## Settings

### English or Metric Units

Description: Choose to view your results in English (e.g., inches) or metric (e.g., centimeters) units.

Why It's Important: This function converts your results to English or metric units so you can view them in a way that suits your needs. This is also helpful if you have chosen to record your field data using one set of units, but would like to see results reported in different units.

### Common or Scientific Species Names

Description: Choose to view your species by scientific name (e.g., *Acer rubrum*) or common name (e.g., Red maple).

Why It's Important: Many of the model outputs are reported by species. This function converts your results to scientific or common name so you can view them in the way that suits your needs.

### Coordinates, Comments, User Tree ID

This information can be turned on and viewed in several reports under the Individual Level Results menu. When a report is chosen that information for these options can be displayed, the option name will become highlighted and users can check the applicable

box next to the name. After a box is clicked on, this information will be added to the report without having to submit data for processing.

## Model Notes



### Model Notes

Description: The notes available here provide more information about the data processing that occurs within the Eco model. For example, notes displayed here may tell a user that because energy data collected for a specific tree was invalid, it has not been included in estimated energy effects.

Why It's Important: This function provides a good opportunity to see if any errors have occurred during data collection or data entry. You can use the key below your processing notes to decipher any errors that occurred and determine how to resolve them.



### Map Active Report (beta)

Description: The map that can be viewed here contains pollution stations used for this project and, if latitude and longitude were collected, locations of plots and/or trees.



Description: This function allows you to export tabular report data from an open report to a "comma separated values" (csv) file format.

Why It's Important: Data exported as a csv file are compatible with Microsoft Excel and text editors such as WordPad and Notepad. This function allows you to save and organize your project reports however you choose.



Description: This function allows you to export latitude and longitude coordinates from an open report to a "keyhole markup language" (kml) file format.

Why It's Important: Data exported as a kml file are compatible with Google Earth. This function allows you to view pollution station locations and plot and tree locations if coordinates were collected for those elements.

## Forecast

On this tab, you can run Eco's Forecast component at a basic or advanced level and view the results of that run. To estimate what your urban forest will look like in the future, Forecast uses the structural estimates (e.g., number of trees, species composition) generated by running the i-Tree Eco model along with anticipated growth and mortality rates. You can even include future tree planting scenarios or possible adverse events, such as a storm or pest infestation, to predict their impact on your urban forest.



### Tip

Don't be shy – try just clicking the **Run Forecast** button in the ribbon bar! The Forecast model will use the provided default values and give you a basic estimate of what your urban forest will look like in the future. You can choose to make changes to the defaults later if you like.

## Configuration Summary



### Configuration Summary

Description: This is a summary report that displays all of the parameters that you defined for the active configuration. This includes parameters defined under the Basic Options function, such as number of years to forecast, frost-free days, and base annual mortality rates, as well as any additional annual mortality rates or tree planting and extreme event scenarios that you defined. If you have chosen to run Forecast using the defaults provided, you will see those values here as well.



### Eco Guide

Look at the **Eco Guide to Using the Forecast Model** for detailed directions.

## Run Forecast



### Run Forecast

Description: This function is used to begin running the Forecast model.

Why It's Important: Clicking on the **Run Forecast** button starts the process of estimating your future urban forest. The configuration selected in the **Active Configuration** drop-down menu on the ribbon defines the settings for your Forecast results. Make sure that the desired configuration is selected before running Forecast.

## Basic Options



### Basic Options

Description: In this function, you can set the number of years into the future your results will be forecasted, the number of days without frost in your study area, and basic annual mortality rates.

Why It's Important: The variables that you can set in this function allow you to customize your Forecast results at a very basic level. Please note that making changes here is optional. You can always run the model using the defaults provided!

## Custom Options



### Annual Mortality Rates

Description: In this function, you can define your annual mortality rates.

Why It's Important: The rates that you set in this function allow you to customize your Forecast results at a more advanced level. One of the advantages of setting advanced mortality rates is that you can apply annual mortality rates to specific condition classes, strata, or genera. Please note that making changes here is optional. You can always run the model using the defaults provided!



### Trees to Plant

Description: In this function, you can define one or more tree planting scenarios.

Why It's Important: The tree planting scenarios that you define in this function allow you to customize your Forecast results at a more advanced level. One of the advantages of including tree planting scenarios is that you can model what your urban forest will look like in the future as a result of one or more tree planting events, allowing you to account for tree planting in your study area (or even natural regeneration, which can be factored in as if it were tree planting). Please note that adding scenarios here is optional. You do not need planting scenarios to run the model!



## Extreme Events

- **Pest Outbreaks**

Description: In this function, you can define one or more pest outbreaks, such as an emerald ash borer infestation, and the annual mortality rate associated with each event.



- **Weather Events**

Description: In this function, you can define one or more weather events, such as hurricane or tropical storm, and the annual mortality rate associated with each event.

Why It's Important: The extreme events that you define in this function allow you to customize your Forecast results at a more advanced level. One of the advantages of defining extreme events is that you can model what your urban forest will look like in the future as a result of the loss of trees. Extreme events can be set as a single incident or recurring event. Please note that adding events here is optional. You do not need extreme events to run the model!

## Configurations

The **Configurations** group of the **Forecast** tab encompasses multiple functions, including the **Active Configuration** drop-down list and **Rename, New, Duplicate, Delete, and Restore Defaults** functions. One of the useful features of Forecast is that you can make use of the component many different ways by projecting future estimates with any number of combinations of settings, tree planting scenarios, and extreme events. Each one of these combinations is a different configuration and can be defined by going through the **Basic** or **Custom Options** of the ribbon. You can also choose to run Forecast without providing any special information and simply using the defaults provided.

### Active Configuration

Description: This drop-down menu includes all of the Forecast configurations that you have created for your Eco project.

Why It's Important: The settings associated with the "active" configuration displayed here are what will be used when you decide to run Forecast.



#### Tip

You can choose to work with a different configuration at any time. Simply select the desired configuration from the **Active Configuration** drop-down menu! When you click on one of the other buttons or functions in the ribbon, the settings or reports will then be associated with that configuration.



### Rename

Description: This tool allows you to rename the configuration that is displayed in the **Active Configuration** drop-down menu.



### **New**

Description: This tool allows you to create a new Forecast configuration. Your new configuration will contain all of the default Forecast settings until you make changes.



### **Duplicate**

Description: This tool allows you to duplicate the configuration that is displayed in the **Active Configuration** drop-down menu.

Why It's Important: This a useful tool if you have created a custom configuration. By duplicating your custom configuration, you can start with whatever changes you have already made to the settings and just make desired modifications to create different scenarios more easily.



### **Delete**

Description: This tool allows you to delete the configuration that is displayed in the **Active Configuration** drop-down menu.



### **Restore Defaults**

Description: This tool will restore the default Forecast settings to the configuration that is displayed in the **Active Configuration** drop-down menu.

## **Reports**



### **Composition and Structure**

Description: The standard reports in this drop-down menu summarize information about the structure of your future urban forest, including number of trees, tree cover, DBH (diameter at breast height), and leaf area and biomass. These reports are in tabular or chart format and can be saved or printed for use outside of the Eco application.



### **Benefits**

Description: The standard reports in this drop-down menu summarize information about the function of your future urban forest, including carbon storage and sequestration and pollution removal. These reports are in tabular or chart format and can be saved or printed for use outside of the Eco application.

## **Units**

### **English or Metric**

Description: Choose to view your results in English (e.g., inches) or metric (e.g., centimeters) units.

Why It's Important: This function converts your Forecast results to English or metric units so you can view them in a way that suits your needs. This is also helpful if you have chosen to record your field data using one set of units, but would like to see results reported in different units.

## Editing Mode



### Editing Mode

Description: This tool allows you to work in Editing mode in the **Forecast** tab.

Why It's Important: After the Forecast model has been run using a specified configuration, the settings of that configuration will be locked so they cannot be edited unintentionally. In order to edit those settings, first make sure that the appropriate configuration is selected in the **Active Configuration** drop-down menu and then switch to Editing mode by clicking on the **Editing Mode** function. *If you choose to work in Editing mode, you will need to run Forecast again using that configuration to get updated results.*

## Support

On this tab, you can access i-Tree Eco's numerous support resources.



### User Manual

Description: This function provides detailed specifications on setting up a project and carrying out data collection in the field.



### User Guides

Description: This function provides topic-specific information to help users work through specific tasks for their project. The user guides available here are the same that are referenced throughout this manual.



### i-Tree Methods

Links to the Understanding i-Tree: Summary of Programs and Methods paper, a comprehensive report describing i-Tree methods, potential limitations, future goals, and opportunities to facilitate new science and international collaboration from Dr. Dave Nowak senior scientist and i-Tree team leader with the USDA Forest Service.



### Video Learning



### User Forum

Description: This function links you to the webpage where you can participate in a moderated discussion forum to solicit advice, get technical questions answered, communicate experiences, and view frequently asked questions (FAQs).



### **i-Tree Website**

Description: This function links you to the webpage where you can learn about all of the i-Tree applications and utilities, access i-Tree support resources, and read about what's new with i-Tree.



### **Software Update**

Description: This function checks for new versions of the i-Tree Eco software and downloads software updates.



### **About**

Description: This option provides general information for the i-Tree Eco application. You can read an overview of the i-Tree Eco model and view version information, acknowledgements, and credits.



### **License Agreement**

Description: This function opens the i-Tree End User's License Agreement that you agree to when you download the i-Tree software and run an Eco project.



### **Feedback**

Description: This function links you to the webpage where you can provide feedback about your experience using the i-Tree Eco application.



### **What's New**

Description: This option provides you with a list of new features in Eco v6.0. You can read an overview of significant upgrades over previous versions and other important differences.



### **Change Log**

Description: To read all recent changes made to i-Tree Eco, please see the change log.

## **Adding Data**

To add or edit your project data in Eco, click on your computer's **Start button > (All) Programs > i-Tree > i-Tree Eco v6**. You should have already created a new project before going out in the field to collect data. However, if you have not, refer back to **Phase III > Preparing for the Field** for directions on Getting Started in Eco or follow Eco's on-screen help text.



### Tip

The **Data** tab is where you add your new data manually or edit data that has already been entered.

To open an existing project:

- 1 Click **File > Open Project**.
- 2 Browse to the folder where you saved your project, click on the file name, and click **Open**.

## From Paper Forms

If you recorded your data using Eco's paper form, you will have to enter your data manually:

- 1 Click on the **Data** tab.
- 2 Use the functions in the **Inventory Data** group of the ribbon.

The data entry forms are in table format and allow you to enter or edit data for plots, trees, and shrubs, depending on how you customized your project. The tools in the **Action** group allow you to add new records, delete existing records, and undo or redo the last actions that you took.

## From the Mobile Data Collector

If you recorded your data using Eco's mobile data collector, you can import your data directly into Eco:

- 1 Click on the **Data** tab.
- 2 Click on the **Retrieve from Mobile** function.
- 3 Enter your password in the space provided.
- 4 Click **Show List** and a description of your data will appear.
- 5 Check the box next to the record(s) that you would like to retrieve. Each record includes a description and date to help you determine which records should be imported.
- 6 Click **Retrieve Data**.

## From the Complete Inventory Importer

If you have an existing tree inventory, you can import your data directly into your complete inventory project:

- 1 Click on the **Data** tab.
- 2 Click on the **Trees** function. (Note: The **Import** tool will become available in the ribbon.)
- 3 Click on the **Import** tool to import your existing tree inventory.
- 4 In the **Data Import Wizard**, click **Browse**.
  - a Navigate to the file containing your inventory data.
  - b Select the file and click **Open**.
- 5 Confirm that the data that appears in the table is correct and click **Next**.
- 6 Match your existing data fields to Eco's data fields.



#### Tip

Try moving from left to right clicking on each column in turn. This can help ensure that you match all necessary columns to an Eco field.

- a Select an inventory column from the table. The column header will appear in the "Your Source Column" space towards the bottom of the window.
  - b Choose the "Eco Field" from the drop-down list that defines the type of data in your selected column.
  - c Check the box indicating whether or not you will need to map your field values to the Eco field values. (Note: You will be prompted to complete the value mapping later. See step 8.)
  - d **CONDITIONALLY REQUIRED:** As previously described, Eco data variables can often be displayed in several ways. For example, species data can be entered as common name, scientific name, or species code. For data variables where this applies, a "Field Type" drop-down list will appear below "Eco Field." Select the field type that matches your existing data.
  - e Repeat steps 6a through 6d until each variable that you would like imported has been matched to the appropriate Eco field.
- 7 Click **Next**.
- 8 **CONDITIONALLY REQUIRED:** For data variables that you indicated the need to map field values (step 6c), match your field values to Eco's.
  - a In the upper table, select a row.
  - b In the lower table, choose the "Eco Value" from the drop-down list that matches "Your Value."
  - c Move through the lower table until all of your values have been matched to an Eco value.
  - d Repeat steps 8a through 8c until all necessary data variables have been mapped.
- 9 Click **Next**.
- 10 Review the results of your processed data at the top of the **Data Import Wizard**. This information will tell you how many records from your inventory data will be imported.

- 11 When you are satisfied with the data that will be imported, click **Finish**. (Note: Use the **Back** button to return to previous steps to make adjustments.)



### Eco Guide

For more information on importing a complete inventory, please see the [Eco Guide to Importing an Existing Inventory](#).

# Phase V: Viewing Your Reports

After you have established your project settings in the **Project Configuration** tab and entered your field data in the **Data** tab, it is time to run the i-Tree Eco model and get the results for your project!

i-Tree Eco presents model results in the **Reports** tab that include charts, tables, and a summary, narrative report. Functions that are greyed out cannot be accessed at that point. If you have not yet run the i-Tree Eco model, most of the reports, charts, and tables will not be available until after you have done so. Depending on the type of project and data collected, some analyses may not be completed.

## Running the Eco Model

To start, open your existing project:

- 1 Click **File > Open Project**.
- 2 Browse to the folder where you saved your project, click on the file name, and click **Open**.

Running the Eco model is a two-step process that is necessary to view your reports or use Forecast. The first step is to send your data to the i-Tree server where the Eco model will be run. The second step is to retrieve your results from the server.

First, send your data to the i-Tree server:

- 1 Click on the **Reports** tab.
- 2 Click on the **Submit Data for Processing** function.
- 3 Read the i-Tree End User's License Agreement and click **OK** if you consent.
- 4 In the **Contact Information** window, enter your personal information in the spaces provided.
- 5 To confirm your email address, enter the same email address in the spaces labeled "Email" and "Confirm." This information is critical.
- 6 Click **OK**.

Please be patient – model processing time depends on the number of projects that have been recently submitted to the server as well as the size of your project. You can click on the **Track & Retrieve Results** function to track your status in the queue.

When your data have been processed, an auto-generated email notifying you that the results are ready to download will be sent to the email address that you provide in the **Contact Information** window. This email will be from info@itreetools.org; please check your spam



folders if you do not receive the email. Likewise, you will be notified of processing errors that require data to be submitted again. If you do not receive your results within 24 hours, please contact [info@itreetools.org](mailto:info@itreetools.org).

Second, retrieve your results from the i-Tree server:

- 1 Click on the **Reports** tab.
- 2 Click on the **Track & Retrieve Results** function.
- 3 In the **Retrieve Processed Results** window, click **OK**.
- 4 Please be patient while results are downloaded.

You will see that many of the reporting options listed in the ribbon bar are greyed out and unavailable until after you load your results from the server.

If you are unsure whether or not you have run the Eco model, you can check the **Project Metadata** report of the **Reports** tab. This information is especially useful since you may find it necessary to run the i-Tree Eco model more than once throughout the duration of your project.



#### Caution

If you make changes to your project settings or add or edit your field data, you will need to send your data to the server and retrieve your results again to ensure that your changes are reflected in your reports.

## Overview of Reports

Read through the descriptions in this section of the manual to learn more about the reports provided in Eco. The reports that are available to you are entirely based on the nature of your project and the data that you collected in the field or provided during project configuration. The **Project Metadata** report in the **Reports** tab provides a list of all possible Eco reports and indicates which ones are available for your specific project.



#### Tip

Need help interpreting some of your results? The **Glossary** of this manual is a great resource for definitions of key terms!

i-Tree Eco provides a wide variety of standard reports to users.

The **Formatted Reports** group contains five drop-down lists to choose reports from:

- **Composition and Structure** charts and tables present information on the structural aspects of the urban forest of your study area, including population size, species composition, leaf area, tree condition, and biomass information. Results are provided in a variety of ways, such as classified by DBH size class or by strata or presented on a per-unit-area (per-acre or per-hectare) basis.
- **Benefits and Costs** charts and tables present information on the environmental benefits that are provided by the urban forest in your study area. Results are provided in functional units (e.g., tons of carbon sequestered) and in associated monetary values.
- **Individual Level Results** charts and tables present information on the characteristics of the sampled trees in your study area, including structural aspects and ecosystem services. Results are provided for each individual tree, as well as by species.



#### Caution

If you are doing a plot-based sample project, remember that the reports related to trees in the **Individual Level Results** drop-down menu are only reporting results for the trees that you sampled during field data collection. These results do not represent the entire population in your study area.

- **Pest Analysis** charts and tables include a standard report for all users on the susceptibility of their urban forest to known pests. For users who choose to conduct the Pest Detection Module, additional reports summarize the results of that analysis.
- **Air Quality Health Impacts and Values** tables include estimates of the number of adverse health incidents that were avoided due to changes in pollutant concentrations levels related to trees, shrubs, and grass/herbaceous ground cover in plot-based sample projects. In complete inventory projects only the trees report is available.

The **Charts** group contains one drop-down list to choose reports from:

- **Pollution and Weather** charts and tables present information from the weather and pollution data used for your project, such as rain, temperature, air pollutant concentration, and air pollutant concentration.

The **Model Notes** function provides more information about the data processing that occurs within the Eco model.

## Reports

The **Units** and **Species Names** groups include functions that allow you to set how units (i.e., English or metric) and species names (i.e., common or scientific) are displayed in your reports. You may choose to switch between the available options while you view your reports.

### Project Metadata

This report provides important information describing your project, including:

- Version of i-Tree Eco used
- Date when the project was created
- Whether or not the model has been run
- Project name, series, and year
- Description of project settings
- Details about pollution and weather data used

One important piece of information that can be gathered here is whether or not the i-Tree Eco model has been run. This information is especially useful since you may find it necessary to run the i-Tree Eco model more than once throughout the duration of your project.

### Written Report

This report includes a summary and discussion of the following results from your project:

- Tree characteristics of the urban forest
- Urban forest cover and leaf area
- Ecosystem services (air pollution removal, carbon storage, etc.)
- Structural and functional values of trees
- Potential pest impacts
- i-Tree Eco methods

### Composition and Structure Reports

#### Structure Summary > By Species

This report provides a summary of Eco's structural estimates, including number of trees, leaf area, leaf biomass, tree biomass, and average condition, for each species in your study area.

#### Structure Summary > By Stratum and Species

This report provides a summary of Eco's structural estimates, including number of trees, leaf area, leaf biomass, tree biomass, and average condition, for the tree species in each stratum in your study area.

### **Population Summary > By Species**

This report provides total estimates and percent contributions of the number of trees for each species in your study area. Results are displayed in pie chart and table formats.

### **Population Summary > By Stratum**

This report provides total estimates and percent contributions of the number of trees found in each stratum in your study area. Results are displayed in bar chart, pie chart, and table formats.

### **Population Summary > By Stratum per Unit Area**

This report provides per area (density) estimates of the number of trees found in each stratum in your study area. Per area estimates are calculated by dividing the total number of trees in each stratum by the area of the stratum. This report displays results in bar chart and table formats.

### **Population Summary > Street Trees by Stratum**

This report provides estimates of the number of trees and percent of trees that were designated as street trees or non-street trees. Street tree and non-street tree results are summarized in separate tables by stratum. The tables display the following information:

- Number of Trees – number of trees in stratum that were classified as street trees or non-street trees.
- % of Strata Trees – percent of trees in stratum that were classified as street trees or non-street trees. For example, in the “Summary of Street Trees” table, 100% would indicate that all trees located in that stratum were classified as street trees.
- % of Street Trees – percent of all trees classified as street trees that were located in each stratum. For example, 50% would indicate that half of all street trees were located in that stratum.
- % of Non-Street Trees – percent of all trees classified as non-street trees that were located in each stratum. For example, 25% would indicate that one quarter of all non-street trees were located in that stratum.
- % of All Trees – percent of the total number of trees that were classified as street trees or non-street trees and located in each stratum. For example, in the “Summary of Street Trees” table, 0% would indicate that none of the total number of trees were classified as street trees and located in that stratum.

### **Species Distribution > By DBH Class (chart)**

This report provides estimates of the proportion of trees of each species that falls into each diameter at breast height (DBH) size class. Results are displayed in chart format for the 10 most common species, showing the percent of the tree species population by DBH class.

### **Species Distribution > By DBH Class (vertical table)**

This table provides estimates of the proportion of trees of each species that falls into each diameter at breast height (DBH) size class. Results are displayed for the percent of the tree species population by DBH class and include estimates of standard error. If all DBH classes cannot fit across the top of the table, the vertical display breaks the results into several tables so you can scroll down through all species in your study area before reaching the remaining DBH

classes.

### **Species Distribution > By DBH Class (horizontal table)**

This table provides estimates of the proportion of trees of each tree species that falls into each diameter at breast height (DBH) size class. Results are displayed for the percent of the tree species population by DBH class and include estimates of standard error. If all DBH classes cannot fit across the top of the table, the horizontal display breaks the results into several tables so you can scroll to the right through all DBH classes.

### **Species Distribution > By DBH Class and Stratum (vertical table)**

This table provides estimates of the proportion of trees of each tree species by each strata that falls into each diameter at breast height (DBH) size class. Results are displayed for the percent of the tree species population by DBH class and include estimates of standard error. If all DBH classes cannot fit across the top of the table, the vertical display breaks the results into several tables so you can scroll down through all species in your study area before reaching the remaining DBH classes.

### **Species Distribution > By DBH Class and Stratum (horizontal table)**

This table provides estimates of the proportion of trees of each tree species by each strata that falls into each diameter at breast height (DBH) size class. Results are displayed for the percent of the tree species population by DBH class and include estimates of standard error. If all DBH classes cannot fit across the top of the table, the horizontal display breaks the results into several tables so you can scroll to the right through all DBH classes.

### **Importance Value > By Species**

This table provides estimates of the percent population, percent leaf area, and importance value for each tree species in your study area. Results are ordered from the highest to lowest importance value. Importance value (IV) is calculated as the sum of the percent population and percent leaf area. High importance values do not mean that these trees should necessarily be encouraged in the future; rather, these species currently dominate the urban forest structure.

### **Diversity Indices > By Stratum**

This table provides estimates of various diversity indices by strata in your study area. The diversity indices presented here serve as indicators of species richness, dominance, and evenness. This table displays the following information by strata:

- Richness – number of species sampled.
- Per area estimates of number of species – density estimates calculated by dividing the total number of species in each stratum by the area of the stratum.
- Shannon-Wiener diversity index – a diversity index that serves as an indicator for species richness. Because this index assumes that all species within a stratum or study area have been sampled, it has a moderate sensitivity to sample size; therefore, strata and/or cities may not be comparable.
- Menhinick's diversity index – another diversity index that also serves as an indicator for species richness. This index has a low sensitivity to sample size and therefore may be

more appropriate for comparison between strata.

- Simpson's diversity index – a diversity index that serves as an indicator for species dominance. It also has a low sensitivity to sample size and therefore may be more appropriate for comparison between strata.
- Shannon-Wiener evenness index – an evenness index that, like the Shannon-Wiener diversity index, assumes that all species within a stratum or study area have been sampled. Similarly, it has a moderate sensitivity to sample size; therefore, strata and/or cities may not be comparable.
- Sander's rarefaction technique – a technique used for assessing species richness of samples. For a particular stratum, this value is the number of species one would expect to find if four trees were sampled in the stratum. For the city, this value is the number of species one would expect to find if 250 trees were sampled within the city.

### **Species Range > Native Status by Stratum**

This table provides estimates of the percent of the trees in each stratum that are native to the state that the study area is located in. Possible places of origin include:

- State (for U.S. projects only)
- Africa
- Africa & Asia
- Asia
- Asia & Australia
- Asia & Australia +
- Australia
- Europe
- Europe & Africa
- Europe & Asia
- Europe & Asia +
- North America
- North America +
- North & South America
- North & South America +
- Other
- South America
- Unknown

"Unknown" indicates that the origin of the tree species is unknown; places of origin that include two continents indicate that the tree species is native to both continents; and places of origin marked with a "+" indicate that the tree species is native to the place of origin listed plus another continent that is not listed. For projects in the U.S., "State" is an additional place of origin that is reported and refers to the state in which the study area is located.

### **Condition > By Species**

This table provides estimates of the percent of each tree species found in each condition class. The following condition classes are included in the table:

- Excellent
- Good
- Fair
- Poor
- Critical
- Dying
- Dead

For users providing custom classes, refer back to the **Condition** or **Dieback** function of the **Project Configuration** tab to see how the default classes displayed here are defined in terms of your custom classes. Please be aware that using custom classes makes comparing results across projects more difficult and should be done with caution.

### **Condition > By Stratum and Species**

This table provides estimates of the percent of each tree species by strata found in each condition class. The following condition classes are included in the table:

- Excellent
- Good
- Fair
- Poor
- Critical
- Dying
- Dead

For users providing custom classes, refer back to the **Condition** or **Dieback** function of the **Project Configuration** tab to see how the default classes displayed here are defined in terms of your custom classes. Please be aware that using custom classes makes comparing results across projects more difficult and should be done with caution.

### **Crown Health > By Species**

Crown health is defined as either Condition or Dieback on the Project Configuration > Project Definition > Data Collection Options page. This table provides estimates of the percent of each tree species found in each crown health class. These report classes are defined under Data > Report Classes > Crown Health.

### **Crown Health > By Stratum and Species**

Crown health is defined as either Condition or Dieback on the Project Configuration > Project Definition > Data Collection Options page. This table provides estimates of the percent of each tree species by strata found in each crown health class. These report classes are defined under Data > Report Classes > Crown Health.

### **Leaf Area > By Stratum**

This report provides total estimates and percent contributions of the leaf area found in each stratum in your study area. Results are displayed in bar chart, pie chart, and table formats.

### **Leaf Area > By Stratum per Unit Area**

This report provides per area (density) estimates of the leaf area found in each stratum in your study area. Per area estimates are calculated by dividing the total leaf area in each stratum by the area of the stratum. Results are displayed in bar chart and table formats.

### **Leaf Area and Biomass > Of Shrubs by Stratum**

This table provides per area (density) and total estimates of leaf area and leaf biomass for each shrub species by strata. Per area estimates are calculated by dividing the total leaf area or total leaf biomass in each stratum by the area of the stratum. Results include estimates of standard error.

### **Leaf Area and Biomass > Of Trees and Shrubs by Stratum**

This table provides per area (density) and total estimates of leaf area and leaf biomass for tree and shrub species by strata. Per area estimates are calculated by dividing the total leaf area or total leaf biomass in each stratum by the area of the stratum. Results include estimates of standard error.

### **Ground Cover Composition > By Stratum**

This table provides estimates of percent ground cover for each stratum in your study area. Results include estimates of standard error. The ground cover classes included here are defined in the **Ground Cover** function on the **Project Configuration** tab.

### **Land Use Composition > By Stratum**

This table provides estimates of the amount of each stratum in your study area classified according to the actual land uses measured in the field. If you have chosen to stratify your project by land use, this table provides a useful look at how closely aligned your strata classifications are with actual land uses. Strata are defined in the **Project & Strata Area** function of the **Project Configuration** tab. Land uses are defined in the **Land Use** function on the **Project Configuration** tab.

### **Relative Performance Index > By Species**

This table provides estimates of relative performance index (RPI) by tree species. RPI compares the overall condition of each species to all the others. Values that are higher than 1 indicate that a species has a proportionately better condition rating.

### **Maintenance > Recommended**

This table provides estimates of the number of trees and percent of all trees that were designated as needing maintenance. Results are presented by recommended maintenance type.

### **Maintenance > Recommended by Species**

This table provides estimates of the number of trees, percent of species, and percent of all trees that were designated as needing maintenance. Results are presented by recommended maintenance type and species.



**Maintenance > Recommended by Species and DBH**

This table provides estimates of the number of trees, percent of species, and percent of all trees that were designated as needing maintenance. Results are presented by recommended maintenance type, species, and DBH size classes.

**Maintenance > Task**

This table provides estimates of the number of trees and percent of all trees that were assigned to receive a particular maintenance task. Results are presented by maintenance tasks.

**Maintenance > Task by Species**

This table provides estimates of the number of trees, percent of species, and percent of all trees that were assigned to receive a particular maintenance task. Results are presented by maintenance tasks and species.

**Maintenance > Task by Species and DBH**

This table provides estimates of the number of trees and percent of species and of all trees that were assigned to receive a particular maintenance task. Results are presented by maintenance tasks, species, and DBH size classes.

**Maintenance > Sidewalk Conflicts**

This table provides estimates of the number of trees and percent of all trees that were designated as posing a sidewalk conflict. Results are presented by type of sidewalk conflict.

**Maintenance > Sidewalk Conflicts by Species**

This table provides estimates of the number of trees, percent of species and of all trees that were designated as posing a sidewalk conflict. Results are presented by type of sidewalk conflict and species.

**Maintenance > Sidewalk Conflicts by Species and DBH**

This table provides estimates of the number of trees percent of species and of all trees that were designated as posing a sidewalk conflict. Results are presented by type of sidewalk conflict, species, and DBH size classes.

**Maintenance > Utility Conflicts**

This table provides estimates of the number of trees and percent of all trees that were designated as posing a utility conflict. Results are presented by type of utility conflict.

**Maintenance > Utility Conflicts by Species**

This table provides estimates of the number of trees, percent of species, and percent of all trees that were designated as posing a utility conflict. Results are presented by type of utility conflict and species.

### **Maintenance > Utility Conflicts by Species and DBH**

This table provides estimates of the number of trees, percent of species, and percent of all trees that were designated as posing a utility conflict. Results are presented by type of utility conflict, species, and DBH size classes.

### **Other > Other One / Two / Three**

If you created one or more custom data fields (maximum of three) during project configuration, these tables will provide estimates of the number of trees and percent of all trees that were designated according to those custom fields. Results are presented by custom data field.

### **Other > Other One / Two / Three by Species**

If you created one or more custom data fields (maximum of three) during project configuration, these tables will provide estimates of the number of trees, percent of species, and percent of all trees that were designated according to those custom fields. Results are presented by custom data and species.

### **Other > Other One / Two / Three by Species and DBH**

If you created one or more custom data fields (maximum of three) during project configuration, these tables will provide estimates of the number of trees, percent of species, and percent of all trees that were designated according to those custom fields. Results are presented by custom data fields, species, and DBH size classes.

## **Benefits and Costs Reports**



### **Tip**

Monetary values are based on the **Benefit Prices** function of the **Data** tab. To edit benefit prices, open that function and follow the steps outlined in the **Help** panel. This form can be edited at any time and you will not be required to submit your project again. Results on the **Reports** tab will reflect the change in benefit prices immediately.

### **Benefits Summary > By Species**

This report provides a summary of Eco's benefit estimates, including number of trees, carbon storage and sequestration, avoided runoff, pollution removal, and structural value, for each species in your study area.

### **Benefits Summary > By Stratum and Species**

This report provides a summary of Eco's benefit estimates, including number of trees, carbon storage and sequestration, avoided runoff, pollution removal, and structural value, for the tree species in each stratum in your study area.

### **Carbon Storage of Trees > By Species**

This report provides total estimates and percent contribution of carbon storage of trees by species in your study area. Results are also reported in carbon dioxide equivalent by multiplying carbon storage by the ratio of their atomic weights (44/12). Results are displayed in table format.

### **Carbon Storage of Trees > By Stratum**

This report provides total estimates and percent contribution of carbon storage of trees by strata in your study area. Results are also reported in carbon dioxide equivalent by multiplying carbon storage by the ratio of their atomic weights (44/12). Results are displayed in bar chart, pie chart, and table formats.

### **Carbon Storage of Trees > By Stratum per Unit Area**

This report provides (density) per area estimates of carbon storage of trees by strata in your study area. Per area estimates are calculated by dividing the total carbon storage in each stratum by the area of the stratum. Per area estimates are also reported for the carbon dioxide equivalent. Results are displayed in bar chart and table formats.

### **Annual Carbon Sequestration of Trees > By Species**

This report provides total estimates of gross carbon sequestration of trees by species in your study area. Results are also reported in carbon dioxide equivalent by multiplying carbon sequestration by the ratio of their atomic weights (44/12). Results are displayed in table format.

### **Annual Carbon Sequestration of Trees > By Stratum**

This report provides total estimates of gross carbon sequestration of trees by strata in your study area. Results are also reported in carbon dioxide equivalent by multiplying carbon sequestration by the ratio of their atomic weights (44/12). Results are displayed in bar chart and table formats.

### **Annual Carbon Sequestration of Trees > By Stratum per Unit Area**

This report provides per area (density) estimates of gross carbon sequestration of trees by strata in your study area. Per area estimates are calculated by dividing the total gross carbon sequestration in each stratum by the area of the stratum. Per area estimates are also reported for the carbon dioxide equivalent. Results are displayed in bar chart and table formats.

### **Annual Net Carbon Sequestration of Trees > By Species**

This report provides total estimates of net carbon sequestration of trees by species in your study area. Net sequestration is a measure of the carbon sequestered by trees calculated as the gross carbon sequestered minus the carbon emissions due to decomposition after tree death. Results are also reported in carbon dioxide equivalent by multiplying carbon sequestration by the ratio of their atomic weights (44/12). Results are displayed in table format.

### **Annual Net Carbon Sequestration of Trees > By Stratum**

This report provides total estimates of net carbon sequestration of trees by strata in your study area. Net sequestration is a measure of the carbon sequestered by trees calculated as the gross carbon sequestered minus the carbon emissions due to decomposition after tree death. Results are also reported in carbon dioxide equivalent by multiplying carbon sequestration by the ratio of their atomic weights (44/12). Results are displayed in bar chart and table formats.

### **Annual Net Carbon Sequestration of Trees > By Stratum per Unit Area**

This report provides per area (density) estimates of net carbon sequestration of trees by strata in your study area. Net sequestration is a measure of the carbon sequestered by trees calculated as the gross carbon sequestered minus the carbon emissions due to decomposition after tree death. Per area estimates are calculated by dividing the total gross carbon sequestration in each stratum by the area of the stratum. Per area estimates are also reported for the carbon dioxide equivalent. Results are displayed in bar chart and table formats.

### **Energy Effects > Of Trees**

This table provides total estimates of the effect of trees in your study area on energy usage. Estimates are included for the following energy effects:

- Effect on building energy use (i.e., increases or decreases in the number of MBTUs and MWHs used for heating or cooling residential buildings in study area)
- Effect on carbon emissions (i.e., increases or decreases in carbon emissions from power sources as a result of changes in energy use)
- Value of effects (i.e., economic values associated with the changes in building energy use and carbon emissions)

### **Hydrology Effects of Trees > By Species**

This table provides total estimates of hydrology effects due to trees. Results are presented by species in your study area. This table includes estimates for the following:

- Number of trees
- Leaf area
- Potential evapotranspiration
- Evaporation
- Transpiration
- Water intercepted
- Avoided runoff
- Avoided runoff value

### **Hydrology Effects of Trees > By Stratum**

This table provides total estimates of hydrology effects due to trees. Results are presented by strata in your study area. This table includes estimates for the following:

- Number of trees
- Leaf area
- Potential evapotranspiration

- Evaporation
- Transpiration
- Water intercepted
- Avoided runoff
- Avoided runoff value

### **Oxygen Production of Trees > By Stratum**

This report provides total estimates of oxygen production of trees by strata in your study area. Results are displayed in bar chart and table formats.

### **Oxygen Production of Trees > By Stratum per Unit Area**

This report provides per area (density) estimates of oxygen production of trees by strata in your study area. Per area estimates are calculated by dividing the total oxygen production in each stratum by the area of the stratum. Results are displayed in bar chart and table formats.

### **Pollution Removal by Trees and Shrubs > Monthly Removal**

This table provides total monthly and annual estimates of pollution removal and associated value by the trees and shrubs in your study area. This table displays minimum, maximum, and mean pollution removal and value results for the following pollutants:

- Nitrogen dioxide (NO<sub>2</sub>)
- Sulfur dioxide (SO<sub>2</sub>)
- Ozone (O<sub>3</sub>)
- Carbon monoxide (CO)
- Particulate matter less than 2.5 microns (PM<sub>2.5</sub>)

(Note: While particulate matter smaller than 10 microns (PM<sub>10</sub>) is a significant air pollutant, it is not included in this analysis because i-Tree Eco analyzes particulate matter less than 2.5 microns (PM<sub>2.5</sub>), which is a subset of PM<sub>10</sub>. PM<sub>2.5</sub> is generally more relevant in discussions concerning air pollution effects on human health.)

### **Pollution Removal by Trees and Shrubs > Monthly Removal (chart display)**

This report provides total monthly estimates of pollution removal and associated value by the trees and shrubs in your study area. The report displays charts and tables for the following pollutants:

- Nitrogen dioxide (NO<sub>2</sub>)
- Sulfur dioxide (SO<sub>2</sub>)
- Ozone (O<sub>3</sub>)
- Carbon monoxide (CO)
- Particulate matter less than 2.5 microns (PM<sub>2.5</sub>)

Several of the charts and tables in this report present pollution removal and the associated value for all of the pollutants studied. The remaining charts show pollution removal and value for each pollutant individually. (Note: While particulate matter smaller than 10 microns (PM<sub>10</sub>) is a significant air pollutant, it is not included in this analysis because i-Tree Eco analyzes particulate matter less than 2.5 microns (PM<sub>2.5</sub>), which is a subset of PM<sub>10</sub>. PM<sub>2.5</sub> is generally more relevant

in discussions concerning air pollution effects on human health.)

### **Pollution Removal by Grass/Herbaceous > Monthly Removal**

This table provides total monthly and annual estimates of pollution removal and associated value by grasslands (a combination of maintained and wild grass as well as herbaceous) in your study area. This table displays minimum, maximum, and mean pollution removal and value results for the following pollutants:

- Nitrogen dioxide (NO<sub>2</sub>)
- Sulfur dioxide (SO<sub>2</sub>)
- Ozone (O<sub>3</sub>)
- Carbon monoxide (CO)
- Particulate matter less than 2.5 microns (PM<sub>2.5</sub>)

(Note: While particulate matter smaller than 10 microns (PM<sub>10</sub>) is a significant air pollutant, it is not included in this analysis because i-Tree Eco analyzes particulate matter less than 2.5 microns (PM<sub>2.5</sub>), which is a subset of PM<sub>10</sub>. PM<sub>2.5</sub> is generally more relevant in discussions concerning air pollution effects on human health.)

### **Pollution Removal by Grass/Herbaceous > Monthly Removal (chart display)**

This report provides total monthly estimates of pollution removal and associated value by grasslands (a combination of maintained and wild grass as well as herbaceous) in your study area. The report displays charts and tables for the following pollutants:

- Nitrogen dioxide (NO<sub>2</sub>)
- Sulfur dioxide (SO<sub>2</sub>)
- Ozone (O<sub>3</sub>)
- Carbon monoxide (CO)
- Particulate matter less than 2.5 microns (PM<sub>2.5</sub>)

Several of the charts and tables in this report present pollution removal and the associated value for all of the pollutants studied. The remaining charts show pollution removal and value for each pollutant individually. (Note: While particulate matter smaller than 10 microns (PM<sub>10</sub>) is a significant air pollutant, it is not included in this analysis because i-Tree Eco analyzes particulate matter less than 2.5 microns (PM<sub>2.5</sub>), which is a subset of PM<sub>10</sub>. PM<sub>2.5</sub> is generally more relevant in discussions concerning air pollution effects on human health.)

### **VOC Emissions of Trees > By Species**

This table provides total estimates of volatile organic compounds (VOC) emissions from the tree species in your study area, including monoterpene, isoprene, and the sum of both.

### **VOC Emissions of Trees > By Stratum**

This table provides total estimates of volatile organic compounds (VOC) emissions of trees by strata in your study area, including monoterpene, isoprene, and the sum of both.

### **UV Effects of Trees > By Stratum**

This table provides estimates of the effects that trees have on the ultraviolet (UV) radiation

received in your study area. UV radiation is emitted by the sun and while beneficial to humans in small doses, can have negative health effects when people are overexposed. The UV index scale was developed by the World Health Organization to more easily communicate daily levels of UV radiation and alert people to when protection from overexposure is needed most. UV index values are estimated from UV radiation and adjusted based on local elevation and cloud cover. Tree canopies help to reduce the amount of UV radiation that reaches the ground thus providing people with additional protection from the sun's harmful rays. UV effects are reported in this table for each stratum and the study area as a whole and broken into the following results:

- UV Effects in Tree Shade – changes in UV for a person who is always shaded by tree canopy. For example, someone who is sitting under a tree.
- UV Effects Overall – changes in UV for a person who is in both areas that are shaded by tree canopy and areas that are not. For example, someone who is walking down a street may find themselves under tree canopy at some times and exposed to full UV radiation at others.

Results are additionally reported for the following:

- Protection factor – a unitless value meant to capture the UV radiation-blocking capacity of trees. It is comparable to the SPF rating in sunscreen and calculated as unshaded UV index divided by shaded or overall UV index.
- Reduction in UV Index – the change in UV index as the result of trees and calculated as unshaded UV index minus shaded or overall UV index.
- Percent reduction – the reduction in UV index expressed as a percent change and calculated as the reduction in UV index divided by unshaded UV index.

### **Avian Habitat Suitability > By Plot**

This table provides estimates of avian habitat suitability for each plot in your study area. The suitability index reported here is a unitless value meant to capture the ability of an area to sustain a population based on the habitat features that relate to and influence the patterns of abundance of each species. Two suitability index values are given for each plot. One value is based on the trees that were sampled on the plot and the other value assumes an absence of trees on the plot. The index change due to trees is estimated as the following:

- A relative change calculated as the absolute change (see below) divided by the suitability index with trees.
- An absolute change calculated as the suitability index with trees minus the suitability index without trees.

The avian species reported here are based on their ranges so only those species present in the study area will be included in the report. Data is available for up to nine bird species, including American robin, Baltimore oriole, black-capped chickadee, Carolina chickadee, European starling, northern cardinal, red-bellied woodpecker, scarlet tanager, and wood thrush.

### **Avian Habitat Suitability > By Stratum**

This table provides estimates of avian habitat suitability for each stratum and your study area as a whole. The suitability index reported here is a unitless value meant to capture the ability of an area to sustain a population based on the habitat features that relate to and influence the

patterns of abundance of each species. Two suitability index values are given for each stratum. One value is based on the trees in that stratum and the other value assumes an absence of trees in the stratum. The index change due to trees is estimated as the following:

- A relative change calculated as the absolute change (see below) divided by the suitability index with trees.
- An absolute change calculated as the suitability index with trees minus the suitability index without trees.

The avian species reported here are based on their ranges so only those species present in the study area will be included in the report. Data is available for up to nine bird species, including American robin, Baltimore oriole, black-capped chickadee, Carolina chickadee, European starling, northern cardinal, red-bellied woodpecker, scarlet tanager, and wood thrush.

### **Management Costs > By Expenditure**

This table reports the user-defined expenditures for managing the trees in your study area. From the total costs reported, the cost per tree and cost per capita are also estimated and presented in this table. Management costs are defined by the user in the **Annual Costs** function of the **Data** tab. To edit your annual costs, open that function and follow the steps outlined in the **Help** panel. This form can be edited at any time and you will not be required to submit your project again. Results on the **Reports** tab will reflect the change in annual costs immediately.

### **Net Annual Benefits > Net Annual Benefits for All Trees**

This table reports the economic value of the environmental benefits provided by all of the trees in your study area. The user-defined management costs are reported so that net benefits and benefit-cost ratio can be estimated for your study area. From the total benefits and costs reported, per tree and per capita estimates are also presented in this table. Management costs are defined by the user in the **Annual Costs** function of the **Data** tab. To edit your annual costs, open that function and follow the steps outlined in the **Help** panel. This form can be edited at any time and you will not be required to submit your project again. Results on the **Reports** tab will reflect the change in annual costs immediately.

### **Foodscape Benefits of Trees > By Species**

The report seen in the action panel to the right provides information about the characteristics, productivity and services provided by edible/useful species of trees. It is intended to communicate the value of this subset of trees in order to guide users in the planning, management and selection of the appropriate species.

Only those species for which data has been gathered are included in the report. Additionally, if an entry in the report is blank, no data is currently available for that attribute. In the future, more species will be added. These data were gathered by the **Community Food Forestry Initiative (CFFI)**.



## Individual Level Results

### Composition and Structure > of Plots

This table provides the Plot ID, Stratum, data collection Date, Crew, and indicates if data collection was completed or not. Coordinates and Comments can be viewed after box is checked in the ribbon at the top of the screen.

### Composition and Structure > of Trees

This table presents a summary of the data collected in the field as well as additional estimated tree characteristics for each of the trees sampled in your study area. The table includes Plot and Tree ID, Species Name, DBH, Height, Street Tree Status, Native Status, and estimates for the following:

- Canopy cover
- Tree condition
- Leaf area
- Leaf biomass
- Leaf area index – estimated by dividing leaf area by canopy cover
- Basal area

Coordinates, Comments, and User Tree ID can be viewed after box is checked in the ribbon at the top of the screen.

For users providing custom classes, refer back to the **Condition** or **Dieback** function of the **Project Configuration** tab to see how the default classes displayed here are defined in terms of your custom classes. Please be aware that using custom classes makes comparing results across projects more difficult and should be done with caution.

### Composition and Structure > By Species

This table presents a summary of the data collected in the field as well as additional estimated tree characteristics for each of the species in your study area. The table includes estimates for the following characteristics:

- Tree count
- Canopy cover
- Leaf area
- Leaf biomass
- Basal area

### Composition and Structure > By Stratum

This table presents a summary of the data collected in the field as well as additional estimated tree characteristics for each of the strata in your study area. The table includes estimates for the following characteristics:

- Tree count
- Canopy cover
- Leaf area
- Leaf biomass
- Basal area

### **Tree Benefits and Costs > Tree Benefits and Costs > Summary**

This table provides a summary of Eco's benefit estimates, including structural value, energy savings, carbon storage and sequestration, avoided runoff, and pollution removal, for each of the trees sampled in your study area. Coordinates, Comments, and User Tree ID can be viewed after box is checked in the ribbon at the top of the screen.

### **Tree Benefits and Costs > Carbon Storage**

This table provides estimates of carbon storage for each of the trees sampled in your study area. The percent contribution to the total carbon storage of all sampled trees is also reported. Coordinates, Comments, and User Tree ID can be viewed after box is checked in the ribbon at the top of the screen.

### **Tree Benefits and Costs > Carbon Sequestration**

This table provides estimates of carbon sequestration for each of the trees sampled in your study area. The percent contribution to the total carbon sequestration of all sampled trees is also reported. Coordinates, Comments, and User Tree ID can be viewed after box is checked in the ribbon at the top of the screen.

### **Tree Benefits and Costs > Energy Effects**

This table provides total estimates of the effect of each tree sampled in your study area on energy usage. The table includes estimates for the following energy effects:

- Effect on building energy use (i.e., increases or decreases in the number of MBTUs and MWHs used for heating or cooling residential buildings in study area)
- Monetary value of effects associated with the changes in building energy use. Carbon emissions monetary value is not included in the total value column, therefore the total only represents estimated homeowner savings.

Coordinates, Comments, and User Tree ID can be viewed after box is checked in the ribbon at the top of the screen.

### **Tree Benefits and Costs > Energy Effects**

This table provides estimates of the effects of individual trees in your study area on increases and/or decreases in air pollutants related to energy use.

Coordinates, Comments, and User Tree ID can be viewed after box is checked in the ribbon at the top of the screen.

**Tree Benefits and Costs > Hydrology Effects** This table provides total estimates of the stormwater runoff avoided due to each tree sampled in your study area. The table includes estimates for the following:

- Leaf area
- Potential evapotranspiration
- Evaporation
- Transpiration
- Water intercepted
- Avoided runoff

- Avoided runoff value

Coordinates, Comments, and User Tree ID can be viewed after box is checked in the ribbon at the top of the screen.

### **Tree Benefits and Costs > Pollution Removal**

This table presents total estimates of pollution removal, associated pollution removal value, and volatile organic compound emissions for each of the trees sampled in your study area. The table reports estimates for the following pollutants:

- Nitrogen dioxide (NO<sub>2</sub>)
- Sulfur dioxide (SO<sub>2</sub>)
- Ozone (O<sub>3</sub>)
- Carbon monoxide (CO)
- Particulate matter less than 2.5 microns (PM<sub>2.5</sub>)
- Monoterpene
- Isoprene

Coordinates, Comments, and User Tree ID can be viewed after box is checked in the ribbon at the top of the screen.

(Note: While particulate matter smaller than 10 microns (PM<sub>10</sub>) is a significant air pollutant, it is not included in this analysis because i-Tree Eco analyzes particulate matter less than 2.5 microns (PM<sub>2.5</sub>), which is a subset of PM<sub>10</sub>. PM<sub>2.5</sub> is generally more relevant in discussions concerning air pollution effects on human health.)

### **Tree Benefits and Costs > Oxygen Production**

This table provides total estimates of the oxygen production of each tree sampled in your study area. Coordinates, Comments, and User Tree ID can be viewed after box is checked in the ribbon at the top of the screen.

### **Tree Benefits and Costs > VOC Emissions**

This table provides total estimates of the volatile organic compounds (VOC) emissions of each tree sampled in your study area, including monoterpene, isoprene, and the sum of both. Coordinates, Comments, and User Tree ID can be viewed after box is checked in the ribbon at the top of the screen.

### **Miscellaneous > Plot Comments**

This table lists any comments that were collected related to plots. Coordinates, Comments, and User Tree ID can be viewed after box is checked in the ribbon at the top of the screen.

### **Miscellaneous > Tree Comments**

This table presents comments that were recorded regarding trees in the project. Coordinates, Comments, and User Tree ID can be viewed after box is checked in the ribbon at the top of the screen.

### **Miscellaneous > Shrub Comments**

This table presents comments that were recorded regarding shrubs in the project.

## Air Quality and Public Health Reports

In sample plot based projects there will be four reports under this option that provide estimates of the number of adverse health incidents that were avoided due to changes in pollutant concentration levels attributed to trees, shrubs, and grass/herbaceous ground cover. In complete inventory projects only the trees plot is available. The estimates in the tables reflect the population of your study area. The dollar values reflect the economic value of those reductions in health incidents. The same health effects are not necessarily analyzed for each pollutant. Blank values indicate that incidence reduction and value are not estimated for that pollutant and health effect. For example, acute bronchitis is only estimated for particulate matter less than 2.5 microns (PM<sub>2.5</sub>).

## Pest Analysis Reports



### Tip

Reports summarizing documented signs and symptoms of tree pests and diseases require the collection of additional pest data. Please refer back to **Phase III: Collecting Your Field Data** for more information on the requirements for the supplemental pest analysis.

## Susceptibility to Pests > By Stratum

This table displays results for 36 pests and diseases. Results are reported as the number of trees by strata that are susceptible or not susceptible to each pest. Structural value and leaf area are also estimated based on the number of trees.



### Tip

The susceptibility report does not reflect field-collected data about actual risks and harm, but rather calculates the damage from a potential outbreak based on species diversity in your population. This susceptibility report will continue to be fully functional whether or not you choose to collect the supplemental pest detection data.

## Primary Pest > Impacts by Stratum

This table displays results for the pests that were detected in your study area (based on signs and symptoms reported following the Pest Detection Module protocol).

## Primary Pest > Impacted Tree Details

This table displays results for the pests that were detected in your study area (based on signs

and symptoms reported following the Pest Detection Module protocol).

### **Signs & Symptoms > Totals by Species**

This table displays the percent of trees that are affected by pests for each tree species sampled (based on signs and symptoms reported following the Pest Detection Module protocol).

### **Signs & Symptoms > Summaries by Species**

This table displays the percent of trees that exhibit a condition for each tree species sampled (based on signs and symptoms reported following the Pest Detection Module protocol). The table shows a summary of the more detailed results as well as the percent of trees affected by each sign or symptom for each of the tree species sampled.

### **Signs & Symptoms > Details by Species**

This table displays the percent of trees that exhibit a condition for each tree species sampled (based on signs and symptoms reported following the Pest Detection Module protocol). The table shows the complete detailed results as well as the percent of trees affected by each sign or symptom for each of the tree species sampled.

### **Signs & Symptoms > Totals by Stratum**

This table displays the percent of trees that are affected by pests in each stratum (based on signs and symptoms reported following the Pest Detection Module protocol).

### **Signs & Symptoms > Summaries by Stratum**

This table displays the percent of trees that exhibit a condition for each stratum (based on signs and symptoms reported following the Pest Detection Module protocol). The table shows a summary of the more detailed results as well as the percent of trees affected by each sign or symptom for each stratum.

### **Signs & Symptoms > Details by Stratum**

This table displays the percent of trees that exhibit a condition for each stratum (based on signs and symptoms reported following the Pest Detection Module protocol). The table shows the complete detailed results as well as the percent of trees affected by each sign or symptom for each stratum.

### **Signs & Symptoms > Impacted Tree Finder**

This table is an interactive display that allows you to choose which pest signs and symptoms you are most interested in.

### **Pest Review > Of Assessed Trees**

This table is an interactive display that allows you to choose which pest you are most interested in and view the tree species that exhibit the signs and symptoms associated with that pest.

## **Pollution and Weather Reports**

### **Raw and Source Data > Air Pollutant Concentration**

This report displays the hourly pollution concentration based on air quality data. Results are displayed in line chart and table formats for the user-designated pollution year. Estimates are reported for the following pollutants:

- Nitrogen dioxide (NO<sub>2</sub>)
- Sulfur dioxide (SO<sub>2</sub>)
- Ozone (O<sub>3</sub>)
- Carbon monoxide (CO)
- Particulate matter less than 2.5 microns (PM<sub>2.5</sub>)

### **Raw and Source Data > Photosynthetically Active Radiation**

This report displays the hourly photosynthetically active radiation based on weather data. Results are displayed in line chart and table formats for the user-designated weather year.

### **Raw and Source Data > Rain**

This report displays the hourly precipitation based on weather data. Results are displayed in line chart and table formats for the user-designated weather year.

### **Raw and Source Data > Temperature**

This report displays hourly air temperature based on weather data. Results are displayed in line chart and table formats for the user-designated weather year.

### **Raw and Source Data > UV Index**

This report displays the daily ultraviolet (UV) index in your study area. UV radiation is emitted by the sun and while beneficial to humans in small doses, can have negative health effects when people are overexposed. The UV index scale was developed by the World Health Organization to more easily communicate daily levels of UV radiation and alert people to when protection from overexposure is needed most. UV index values are estimated from UV radiation and adjusted based on local elevation and cloud cover. Results are displayed in line chart and table formats. UV data is from the same year as the user-designated weather and pollution year. It is presented as a daily value at solar noon when the sun is highest in the sky.

### **Air Quality Improvement > By Trees**

This report displays hourly air quality improvement provided by the tree cover in your study area. Results are displayed in line chart and table formats for the user-designated pollution year. Estimates are reported for the following pollutants:

- Nitrogen dioxide (NO<sub>2</sub>)
- Sulfur dioxide (SO<sub>2</sub>)
- Ozone (O<sub>3</sub>)
- Carbon monoxide (CO)
- Particulate matter less than 2.5 microns (PM<sub>2.5</sub>)

### **Air Quality Improvement > By Shrubs**

This report displays hourly air quality improvement provided by the shrub cover in your study area. Results are displayed in line chart and table formats for the user-designated pollution year. Estimates are reported for the following pollutants:

- Nitrogen dioxide (NO<sub>2</sub>)
- Sulfur dioxide (SO<sub>2</sub>)
- Ozone (O<sub>3</sub>)
- Carbon monoxide (CO)
- Particulate matter less than 2.5 microns (PM<sub>2.5</sub>)

### **Air Quality Improvement > By Grass/Herbaceous**

The report seen in the action panel to the right displays the hourly dry deposition of air pollutants per unit of grass/herbaceous cover. This report displays results in line chart and table formats for the user-designated pollution year. Estimates are reported for the following pollutants:

- Nitrogen dioxide (NO<sub>2</sub>)
- Sulfur dioxide (SO<sub>2</sub>)
- Ozone (O<sub>3</sub>)
- Carbon monoxide (CO)
- Particulate matter less than 2.5 microns (PM<sub>2.5</sub>)

### **Air Pollutant Flux (Dry Deposition) > Per Unit Tree Cover**

This report displays hourly dry deposition of air pollutants per unit of tree cover. Results are displayed in line chart and table formats for the user-designated pollution year. Estimates are reported for the following pollutants:

- Nitrogen dioxide (NO<sub>2</sub>)
- Sulfur dioxide (SO<sub>2</sub>)
- Ozone (O<sub>3</sub>)
- Carbon monoxide (CO)
- Particulate matter less than 2.5 microns (PM<sub>2.5</sub>)

### **Air Pollutant Flux (Dry Deposition) > Per Unit Shrub Cover**

This report displays hourly dry deposition of air pollutants per unit of shrub cover. Results are displayed in line chart and table formats for the user-designated pollution year. Estimates are reported for the following pollutants:

- Nitrogen dioxide (NO<sub>2</sub>)
- Sulfur dioxide (SO<sub>2</sub>)
- Ozone (O<sub>3</sub>)
- Carbon monoxide (CO)
- Particulate matter less than 2.5 microns (PM<sub>2.5</sub>)

### **Air Pollutant Flux (Dry Deposition) > Per Unit Grass/Herbaceous Cover**

The report seen in the action panel to the right displays the hourly dry deposition of air pollutants per unit of grass/herbaceous cover. This report displays results in line chart and table

formats for the user-designated pollution year. Estimates are reported for the following pollutants:

- Nitrogen dioxide (NO<sub>2</sub>)
- Sulfur dioxide (SO<sub>2</sub>)
- Ozone (O<sub>3</sub>)
- Carbon monoxide (CO)
- Particulate matter less than 2.5 microns (PM<sub>2.5</sub>)

### **Transpiration > By Trees**

This report displays hourly transpiration by trees. Transpiration is the amount of water moved through plants and released to the atmosphere. Results are displayed in line chart and table formats for the user-designated weather year.

### **Transpiration > By Shrubs**

This report displays hourly transpiration by shrubs. Transpiration is the amount of water moved through plants and released to the atmosphere. Results are displayed in line chart and table formats for the user-designated weather year.

### **Evaporation > By Trees**

This report displays the hourly evaporation by trees. Evaporation is the amount of water that is released to the atmosphere from the plant's surface. Results are displayed in line chart and table formats for the user-designated weather year.

### **Evaporation > By Shrubs**

This report displays the hourly evaporation by shrubs. Evaporation is the amount of water that is released to the atmosphere from the plant's surface. Results are displayed in line chart and table formats for the user-designated weather year.

### **Water Intercepted > By Trees**

This report displays the hourly water interception by trees. Water intercepted is the amount of rainfall that fell on plants and was intercepted by the plant's leaves. This water is eventually evaporated to the atmosphere. Results are displayed in line chart and table formats for the user-designated weather year.

### **Water Intercepted > By Shrubs**

This report displays the hourly water interception by shrubs. Water intercepted is the amount of rainfall that fell on plants and was intercepted by the plant's leaves. This water is eventually evaporated to the atmosphere. Results are displayed in line chart and table formats for the user-designated weather year.

### **Avoided Runoff > By Trees**

This report displays the hourly avoided runoff by trees. Avoided runoff is the amount of water that would become surface runoff to streams, but does not. Estimates incorporate water interception by plants, ground depression storage, infiltration on pervious ground covers, and overland flow on impervious ground covers. Results are displayed in line chart and table formats



for the user-designated weather year.

### **Avoided Runoff > By Shrubs**

This report displays the hourly avoided runoff by shrubs. Avoided runoff is the amount of water that would become surface runoff to streams, but does not. Estimates incorporate water interception by plants, ground depression storage, infiltration on pervious ground covers, and overland flow on impervious ground covers. Results are displayed in line chart and table formats for the user-designated weather year.

### **Potential Evapotranspiration > By Trees**

This report displays the hourly potential evapotranspiration by trees. Potential evapotranspiration is the sum of the evaporation from the soil and the transpiration from plants that would occur if an unlimited amount of water were available. Results are displayed in line chart and table formats for the user-designated weather year.

### **Potential Evapotranspiration > By Shrubs**

This report displays the hourly potential evapotranspiration by shrubs. Potential evapotranspiration is the sum of the evaporation from the soil and the transpiration from plants that would occur if an unlimited amount of water were available. Results are displayed in line chart and table formats for the user-designated weather year.

### **UV Index Reduction by Trees > Effects in Tree Shade**

This report displays the daily reduction in UV index by trees in your study area. Ultraviolet (UV) radiation is emitted by the sun and while beneficial to humans in small doses, can have negative health effects when people are overexposed. The UV index scale was developed by the World Health Organization to more easily communicate daily levels of UV radiation and alert people to when protection from overexposure is needed most. UV index values are estimated from UV radiation and adjusted based on local elevation and cloud cover. Tree canopies help to reduce the amount of UV radiation that reaches the ground thus providing people with additional protection from the sun's harmful rays. Effects in tree shade are changes in UV for a person who is always shaded by tree canopy. For example, someone who is sitting under a tree. Reduction in UV Index in tree shade is calculated as unshaded UV index minus shaded UV index. Results are displayed in line chart and table formats. UV data is from the same year as the user-designated weather and pollution year. It is presented as a daily reduction at solar noon when the sun is highest in the sky.

### **UV Index Reduction by Trees > Effects Overall**

This report displays the daily reduction in UV index by trees in your study area. Ultraviolet (UV) radiation is emitted by the sun and while beneficial to humans in small doses, can have negative health effects when people are overexposed. The UV index scale was developed by the World Health Organization to more easily communicate daily levels of UV radiation and alert people to when protection from overexposure is needed most. UV index values are estimated from UV radiation and adjusted based on local elevation and cloud cover. Tree canopies help to reduce the amount of UV radiation that reaches the ground thus providing people with additional

protection from the sun's harmful rays. Overall effects are changes in UV for a person who is in both areas that are shaded by tree canopy and areas that are not. For example, someone who is walking down a street may find themselves under tree canopy at some times and exposed to full UV radiation at others. Reduction in UV Index overall is calculated as unshaded UV index minus overall UV index. Results are displayed in line chart and table formats. UV data is from the same year as the user-designated weather and pollution year. It is presented as a daily reduction at solar noon when the sun is highest in the sky.

### **Isoprene > By Trees**

The table and chart seen in the action panel to the right provides total estimates of the isoprene emissions of trees sampled in your study area.

### **Isoprene > By Shrubs**

The table and chart seen in the action panel to the right provides total estimates of the isoprene emissions of shrubs measured in your study area.

### **Monoterpene > By Trees**

The table and chart seen in the action panel to the right provides total estimates of the isoprene emissions of trees sampled in your study area.

### **Monoterpene > By Shrubs**

The table and chart seen in the action panel to the right provides total estimates of the isoprene emissions of shrubs measured in your study area.

## **Model Notes**

This report provides more information about the data processing that occurs within the Eco model. For example, notes here may indicate that energy data collected for a specific tree was invalid and therefore the estimated energy effects do not include that specific tree. The key below the processing notes can be used to decipher any errors that occurred and determine how to resolve them.

## **Sharing Your Project**

The standard reports provided by Eco can easily be saved or printed so you can make use of them outside the application. After opening a report, a toolbar will become available in the action panel of the Eco window. Reports can be saved in pdf, xlsx, xls, rtf, or docx format.

## **Pack Project**

The **Pack Project** option allows you to create a zip folder that includes all the necessary information to transfer your Eco project from one computer to another or to share the project with another user. To begin the process:

- 1 Click **File > Pack Project**.
- 2 Browse to the folder where you would like to save your zip file, enter a file name, and click **Save**.

To unpack the project on the new computer:

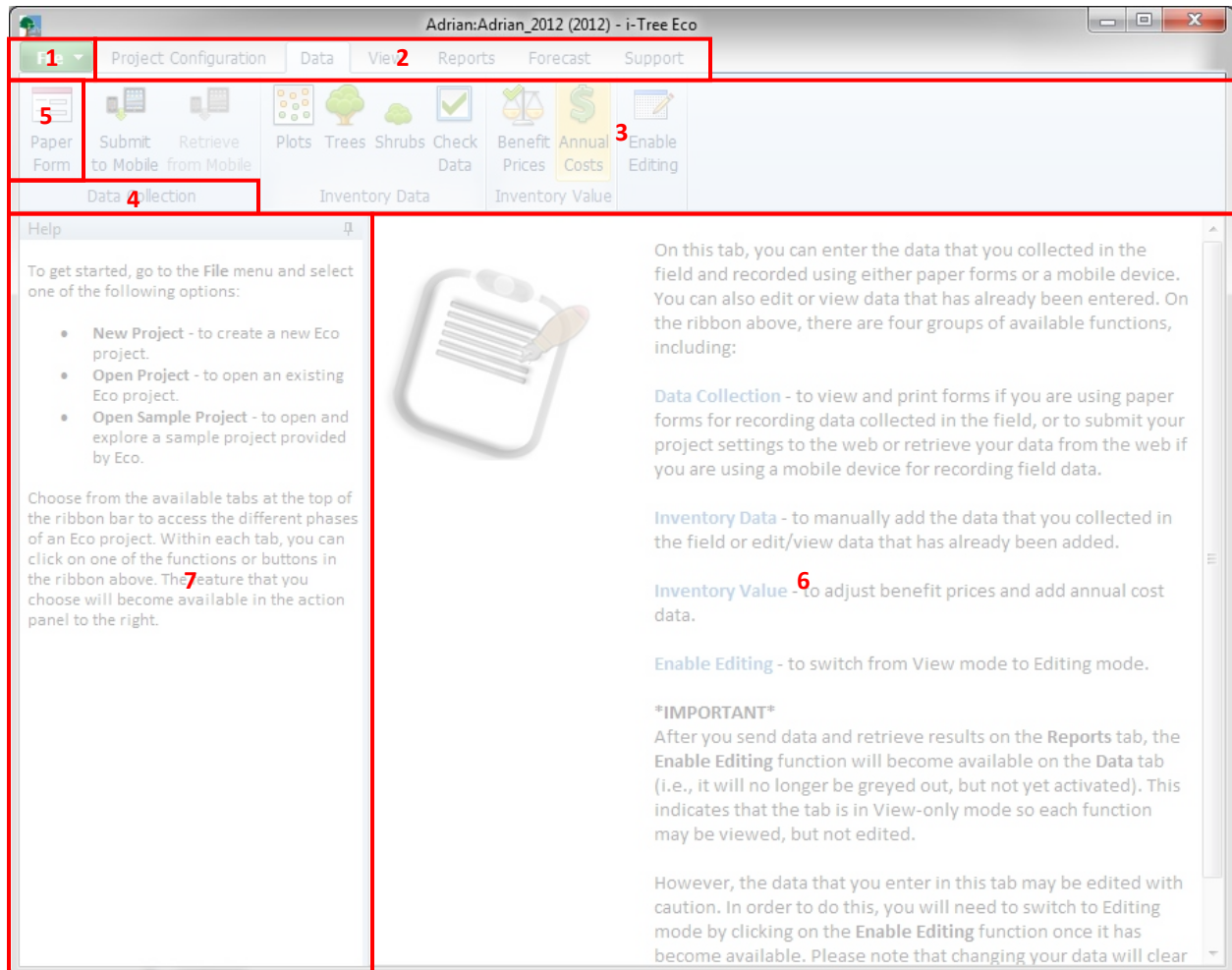
- 1 Navigate to the folder where you saved your zip file.
- 2 Right-click on the zip file and extract files.

The project can now be accessed from the Eco application by opening the project file.

# Glossary

## i-Tree Eco

The user interface of the i-Tree Eco program is organized as shown below. Throughout the help text and User's Manual, there will be references to the various features explained here.



### Features:

- 1 File menu** – This drop-down menu provides options to start a new project, open an existing project, save your project, etc.
- 2 Tabs** – i-Tree Eco has six tabs to choose from that bring up specific functions in the ribbon. Tab options include:
  - Project Configuration
  - Data
  - View

- Reports
  - Forecast
  - Support
- 3 **Ribbon** – The ribbon bar provides access to the groups and functions that are available for each selected tab.
  - 4 **Group** – Similar functions are organized into each group.
  - 5 **Function** – The various buttons or drop-down lists in the ribbon make project settings, data entry, and report features available in the action panel.
  - 6 **Action Panel** – This is where you input and edit your project settings and data, as well as view reports.
  - 7 **Info Panel** – This is where you can view help text for the many features of i-Tree Eco. The panel can be minimized and maximized as desired.

## Resource Structure

**Condition** – Relating to the tree crown health (e.g., poor condition, good, dead/dying). This variable is assessed in the field by identifying a tree's crown condition or dieback.

**Diameter at breast height (DBH)** – The diameter of the tree stem measured at 4.5 feet (1.37 meters) above the ground (breast height).

**Importance value (IV)** –Relating to the dominance of a tree species in the urban forest. Importance value is calculated as the sum of the percent population and percent leaf area. High importance values do not mean that these trees should necessarily be encouraged in the future; rather these species currently dominate the urban forest structure.

**Leaf area** – The total one-sided surface area contributed by all of the leaves on the trees. Leaf area is estimated using measurements of crown dimensions and percentage of crown canopy missing.

**Leaf area index (LAI)** – The total one-sided leaf surface area per unit of ground surface area. Leaf area index is estimated by dividing the leaf area by the ground area. Higher LAIs indicate a greater number of leaves per unit of ground area.

**Leaf biomass** – The total living mass contributed by all of the leaves on the sampled trees.

**Origin** – Relating to the continent or region that a particular tree species is native to (i.e., where the species developed or occurs naturally).

**Rarefaction** – A technique used for assessing species richness of a sample of trees. Using this technique, species richness is estimated by plotting the number of species against the number of samples to create rarefaction curves. For i-Tree, the value produced using the rarefaction technique is the number of species one would expect to find if 4 trees were sampled in each

stratum. For the entire study area, this value is the number of species one would expect to find if 250 trees were sampled within the study area.

**Species diversity** – The number of different species that are represented in the study area. Species diversity takes into account both species richness and species evenness.

**Species dominance** – A measure of the degree to which a species is more numerous than others or contributes more of the total biomass.

**Species evenness** – A measure of how closely matched the numbers of each species are to each other.

**Species richness** – The number of different species that are represented in the study area.

## **Ecosystem Services**

**Avoided runoff** – A measure of the stormwater runoff that is avoided because of rainfall interception by trees, which partially intercept precipitation on their leaves and other surfaces. Avoided runoff is estimated by comparing the hourly precipitation processes and total annual surface runoff volume modeled for the study area as it occurs with trees present and as it would occur if there were no trees.

**VOC Emissions** – A measure of the volatile organic compounds (VOC) released. Trees release VOC emissions, specifically isoprene and monoterpene, which can contribute to the formation of ozone and carbon monoxide. The amount of emissions depends on tree species, leaf, biomass, air temperature, and other environmental factors.

**Carbon sequestration** – A measure of the carbon (in the form of carbon dioxide) that is removed from the atmosphere by trees.

- Gross sequestration – A measure of the carbon sequestered by trees calculated as the difference in estimates of carbon storage between Year X and Year X +1.
- Net sequestration – A measure of the carbon sequestered by trees calculated as the gross carbon sequestered minus the carbon emissions due to decomposition after tree death.

**Carbon storage** – A measure of the carbon that is stored within trees. This is the amount of carbon that is bound up in both the above-ground and below-ground parts of woody vegetation.

**Energy effects** – A measure of the seasonal effects of trees on residential building energy use and consequent emissions from power plants. Energy effects are estimated based on tree distance and direction to residential structures, tree height, and tree condition.

- Energy use – Increases or decreases in the number of MBTUs and MWHs used for heating or cooling residential buildings that are affected by trees, which affect energy

use by modifying local the immediate climate, producing shade, and reducing wind speeds.

- Emissions – Increases or decreases in carbon emissions from power plants as a result of changes in energy use.

**Evaporation** – The amount of water that is released to the atmosphere from the plant's surface.

**Oxygen production** – A measure of the oxygen produced by trees during photosynthesis, taking into account the amount consumed during plant respiration. This net oxygen production is calculated from carbon sequestration estimates based on atomic weight.

**Photosynthetically active radiation** - is light of **wavelengths** 400-700 nm and is the portion of the light spectrum utilized by plants for **photosynthesis**.

**Pollution removal** – A measure of the air pollution that is removed from the atmosphere by trees. Pollution removal is calculated for nitrogen dioxide (NO<sub>2</sub>), sulfur dioxide (SO<sub>2</sub>), ozone (O<sub>3</sub>), carbon monoxide (CO), and particulate matter less than 2.5 microns (PM<sub>2.5</sub>). Trees remove gaseous air pollution primarily by uptake via leaf stomata, though some gases are removed by the plant surface. Trees also remove pollution by intercepting airborne particles. Some particles can be absorbed into the tree, though most particles that are intercepted are retained on the plant surface.

**Potential evapotranspiration** – The sum of the evaporation from the soil and the transpiration from plants that would occur if an unlimited amount of water were available.

**Transpiration** – The amount of water moved through plants and released to the atmosphere.

**UV index** – Ultraviolet (UV) radiation is emitted by the sun and while beneficial to humans in small doses, can have negative health effects when people are overexposed. The UV index scale was developed by the World Health Organization to more easily communicate daily levels of UV radiation and alert people to when protection from overexposure is needed most.

**Water intercepted** – The amount of rainfall that fell on plants and was intercepted by the plant's leaves. This water is eventually evaporated to the atmosphere.

## Values

**Avoided runoff value** – A functional value provided by the trees (i.e., a value that results from an environmental function of trees). This is the monetary value of stormwater runoff that is avoided because of rainfall interception by trees. This value is estimated based on the economic damages associated with runoff and costs of stormwater control.

**Carbon sequestration value** - A functional value provided by the trees (i.e., a value that results

from an environmental function of trees). This is the monetary value associated with tree effects on atmospheric carbon. This value is estimated based on the economic damages associated with increases in carbon or carbon dioxide emissions.

**Carbon storage value** – A structural value based on the tree itself. This is the monetary value associated with tree effects on atmospheric carbon. This value is estimated based on the economic damages associated with increases in carbon or carbon dioxide emissions.

**Compensatory value** – A structural value based on the tree itself. The compensatory value is based on the cost of having to replace a tree with a similar tree.

**Energy effects value** – A functional value provided by the trees (i.e., a value that results from an environmental function of trees).

- Energy use – The monetary value of increased or decreased energy costs as a result of a tree’s effect on residential building energy use. This value is estimated based on the dollar value per MBTU or MWH.
- Emissions – The monetary value of increases or decreases in carbon emissions from power plants as a result of changes in energy use. This value is estimated based on the economic damages associated with increases in carbon or carbon dioxide emissions.

**Pollution removal value** – A functional value provided by the trees (i.e., a value that results from an environmental function of trees). This is the monetary value associated with tree effects on atmospheric pollution. This value is estimated based on the economic damages associated with increases in pollution emissions and/or the impact of air pollution on human health.

## Manual Revision History

Version	Revision Description	Manual Page(s)	Editor
4/19/2021	Human health report available in complete inventory projects	50, 63, 81	ET
4/19/2021	Added i-Tree Methods button description	57	ET